

Incredible opportunity in Sant Joan Despí

Ref: P-016300

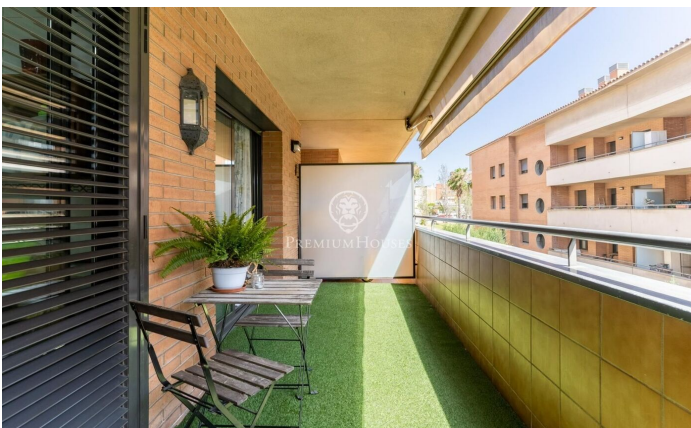
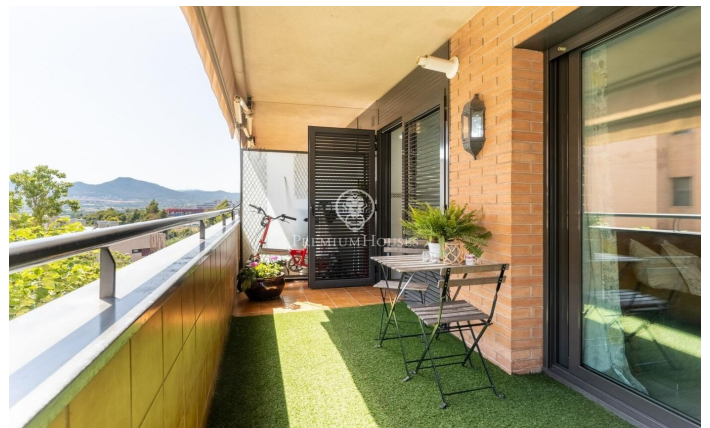


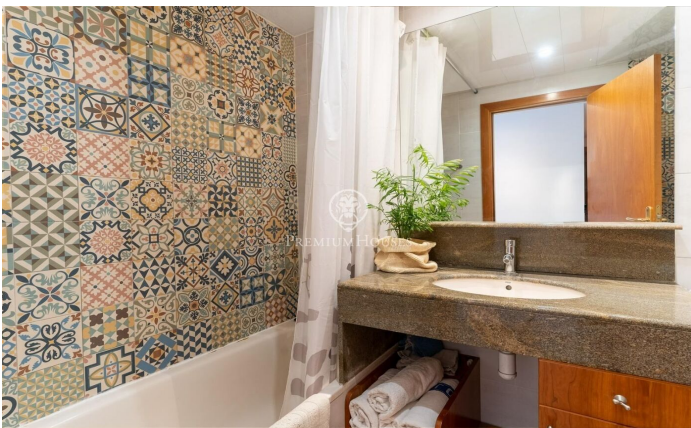
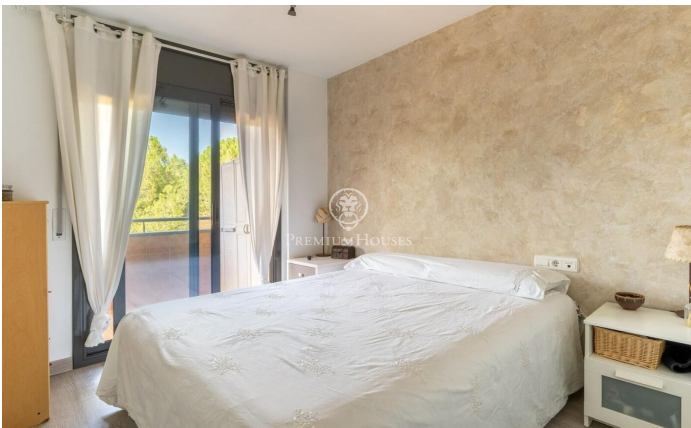
Sant Joan Despí / Barcelona

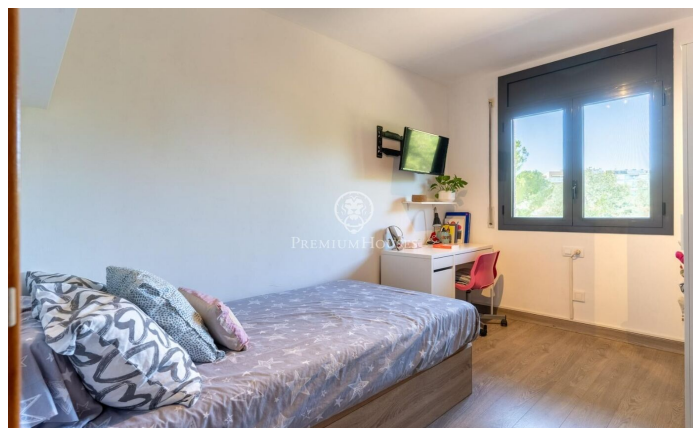
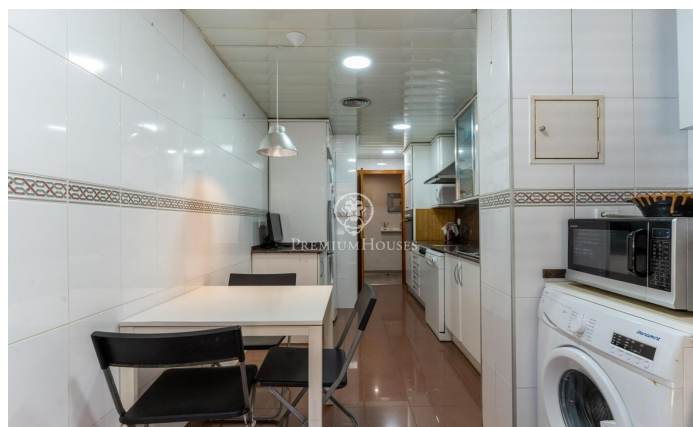
We present a magnificent flat of 116 m² built in the prestigious neighbourhood of Pla del Vent, with large spaces, great luminosity and two wonderful terraces. The flat has a functional layout. An entrance hall gives access to the living areas in a practical and welcoming way. Modern kitchen with direct access to one of the terraces. Spacious and bright living-dining room leading to the second terrace. Both terraces are versatile and offer ideal spaces for a summer dining room or a rest area overlooking the park. There are three exterior bedrooms. The master bedroom includes en suite bathroom. Strategically located just 5 minutes walk from the Renfe station, Tram and direct bus to the Diagonal. A 5-minute drive from Exit 3 of the Diagonal TV3 and with easy access to the airport. In addition to being close to the beaches of Gavà, Castelldefels and Sitges, in an area with a variety of shops, schools, nurseries, two sports centres and a tennis club.

410.000 €

112 m²
3 ???????
2 ?????? ??????
?????????????
??????????
??? ?? ????
?????????
?????
?????????
???????







Contact us for more information or to arrange a viewing

Tel: +34 93 200 30 79

info@premiumhouses.com

www.premiumhouses.es