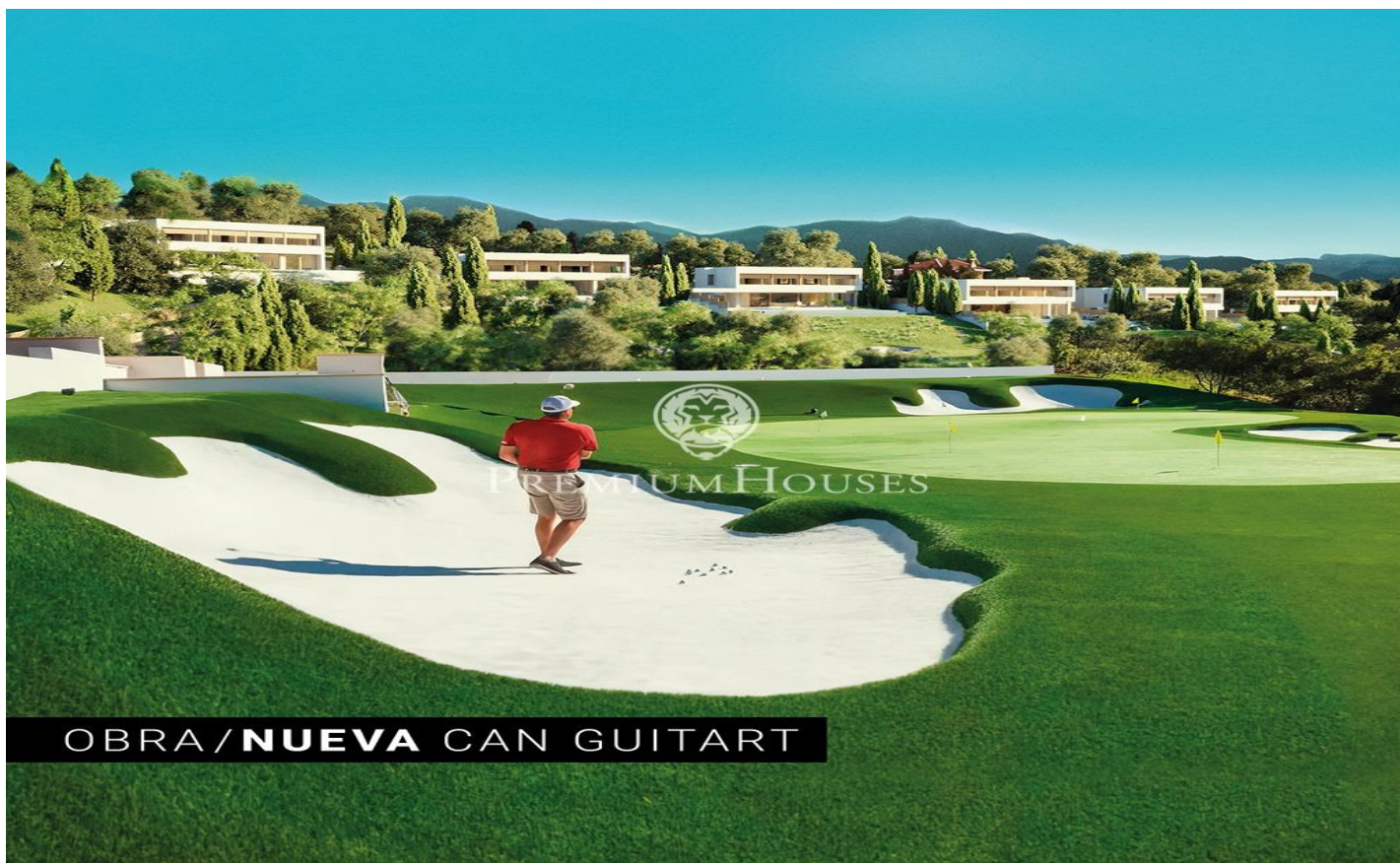


Exclusive new build houses with frontal sea views

Ref: PH102980



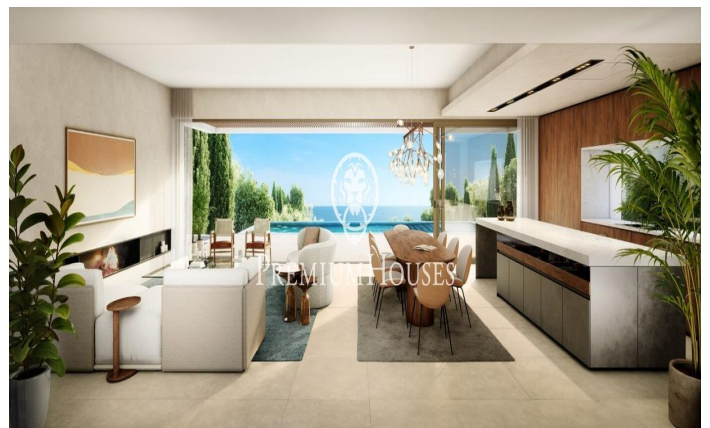
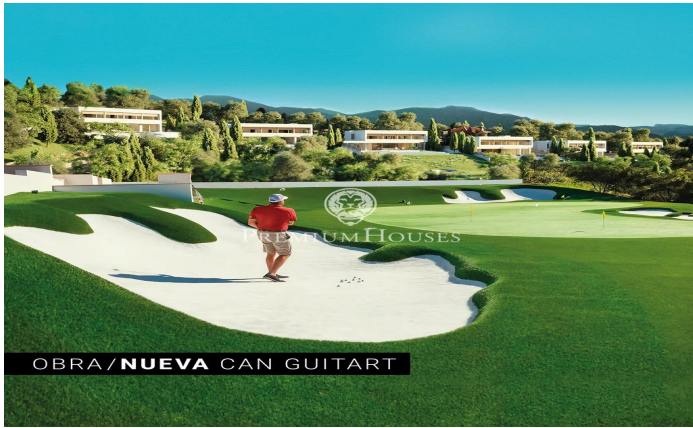
OBRA / NUEVA CAN GUITART

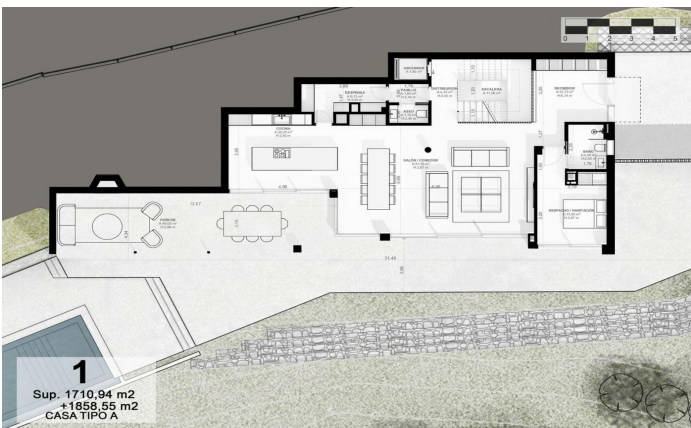
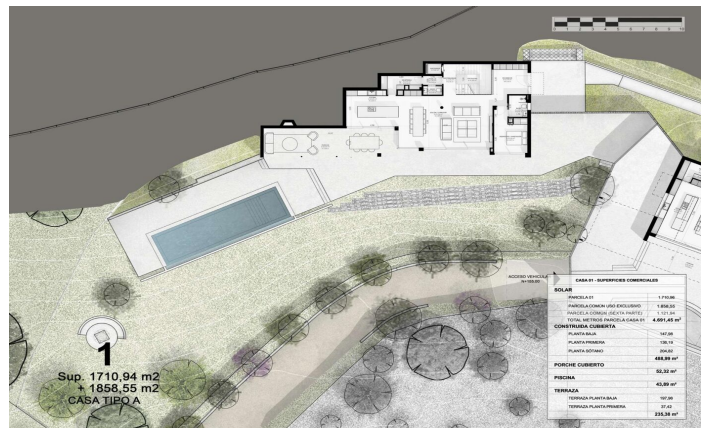
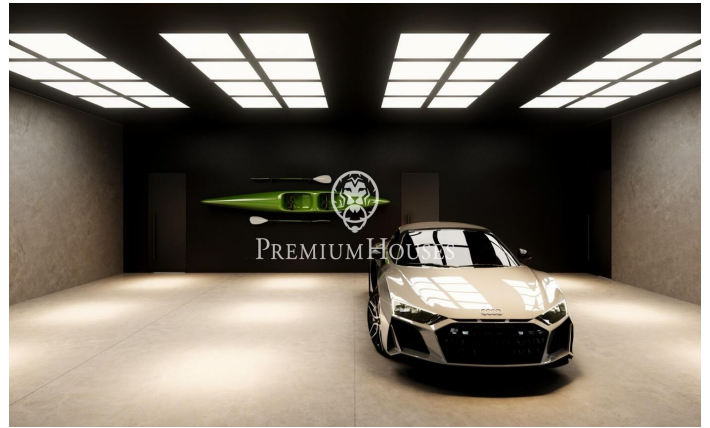
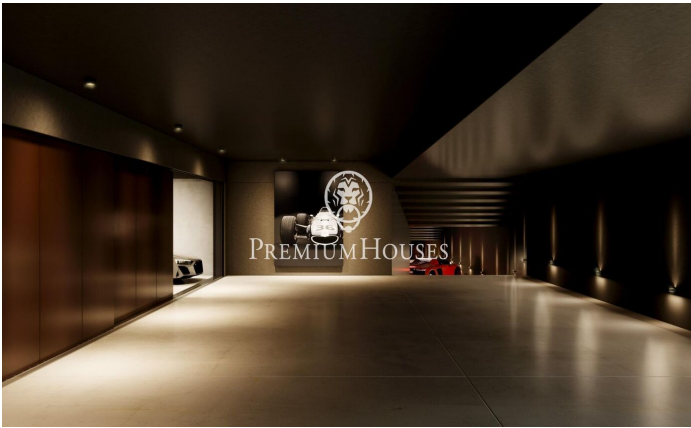
Sant Andreu de Llavaneres / Maresme/Barcelona Costa Norte

We present the most exclusive private residential complex with sea views in Sant Andreu de Llavaneres. Luxury and discretion define it. Discover the only luxury residential complex located in a private gated community, with stunning sea views. Located just five minutes from the charming village of Sant Andreu de Llavaneres, these properties are the perfect retreat for those seeking tranquillity and elegance. Sant Andreu de Llavaneres is a privileged town, famous for its microclimate that makes it a perfect place to enjoy the sun all year round. Here you will find first-class golf courses, the exclusive El Balis yacht harbour, as well as tennis and paddle tennis clubs to satisfy the most demanding. In addition, its varied gastronomic offer will allow you to enjoy a unique culinary experience. And best of all, you are only 30 minutes away from Barcelona, where you can enjoy its rich cultural and gastronomic offer. Don't miss the opportunity to live in a place where luxury and nature meet! With a total surface area of 19.810m², this residential complex of 6 single-family houses, each with a private garden and spectacular sea views. On entering the complex, we are greeted by a pleasant stroll through magnificent trees and low maintenance Mediterranean vegetation that leads direct...

2.500.000 €

- 589 m²
- 5 ????????
- 5 ??????? ???????
- 4,175 m² ??????????
- ????????
- ??????????????
- ????????????
- ??? ?? ????
- ????
- ????????
- ????????????????
- ??????????
- ????????
- ?????????????? ??????





7
Sup. 6731,65 m2
ZONAS COMUNES

1
Sup. 1710,94 m2
+ 1858,55 m2
CASA TIPO A

1
Sup. 1710,94 m2
+ 1858,55 m2
CASA TIPO A

1
Sup. 1710,94 m2
+ 1858,55 m2
CASA TIPO A

SUPERFICIES - ZONAS COMUNES CON GUSTART
MAS SEÑAL NETA COMPROBADA A CASA TIPO A

FINCOSA DE SUELO AGRARIO	2084,00 m ²
FINCOSA DE ACCESO	4.137,85 m ²
	6.221,85 m ²

ANEXOS A LAS VIVIENDAS

- ACCESO SOCIOCOMUNITARIO
- PISTA DE PADEL
- APARCAMIENTO DE COBERTURA
- ZONAS DE HUERTOS INDIVIDUALES
- ARENAS DE FÚTBOL Y ZONAS DE RECREO

CASA TIPO A - SUPERFICIES COMUNICABLES

SOLAR	1.710,94 m ²
FINCOSA	1.858,55 m ²
FINCOSA COMUNICABLE CON ACCESOS	6.221,85 m ²
FINCOSA COMUNICABLE CON VIVIENDA	1.710,94 m ²
TOTAL SUPERFICIE FINCOSA COMUNICABLE	8.691,28 m ²

CONTENIDOS COMUNICABLES

- PLANTA FINCOSA
- PLANTA COMUNICABLE
- PORCHE COBERTO
- FINCOSA
- TERRAZA
- TERRAZA PLANTA SUBTERRANEA
- TERRAZA PLANTA FINCOSA

