

Urban plot with sea views in Mataró

Ref: PH102932

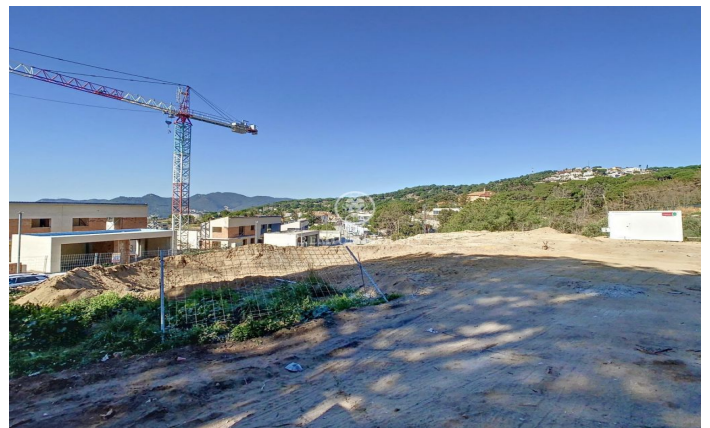
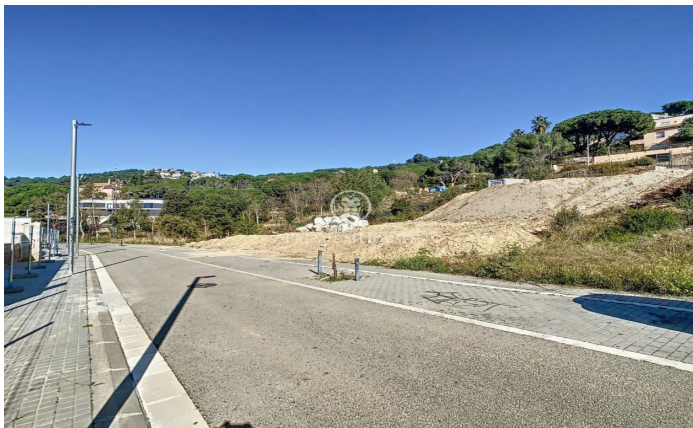


Mataró / Maresme/Barcelona Costa Norte

The plot of surface is 1.000 m² - front 20m² - back 30m². (Minimum plot 800 m²). -- Urban classification: urban residential land suitable for constructing a single-family house. -- Net occupation coefficients: 0.44 m² ceiling/m² of land. Maximum plot occupancy 30%. Ground floor + 1 (+ basement). 15% garage access ramp. Separation from the road 5m² Lateral: 3m; Depth: 3m. Maximum height allowed 7m. -- Outbuildings of 5% of the occupation are allowed. Maximum height 3.3m. -- Uses: Single-family dwelling compatible with sports use. Complete town planning information is available.

395.000 €

1,000 m² ?????????? ???????
??? ?? ????





Barcelona Coast, the best place to live
Over 2,500 hours of sun per year

48 Towns and villages to live seafrent

