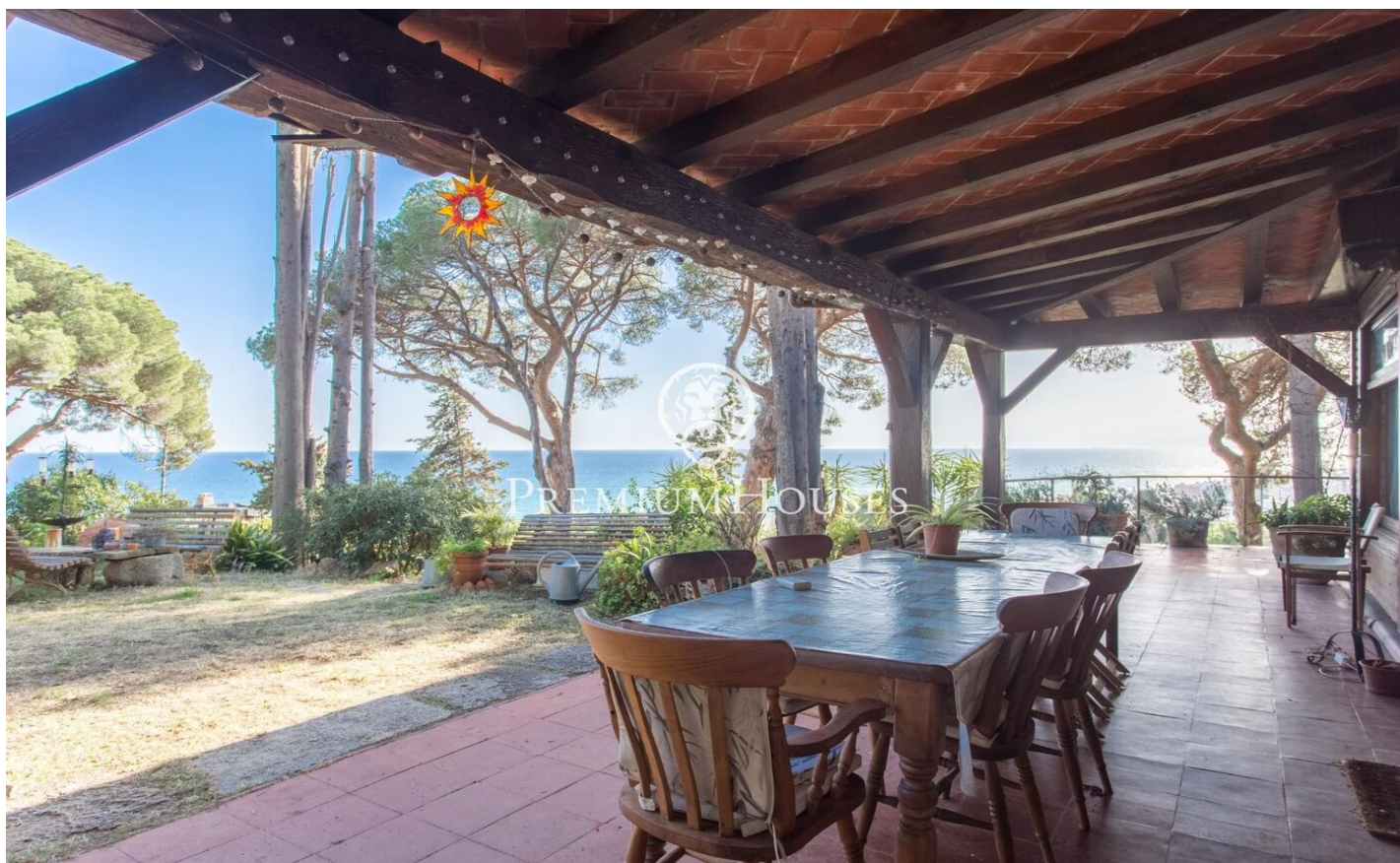


Provençal style house for sale with spectacular sea views

Ref: PH102405

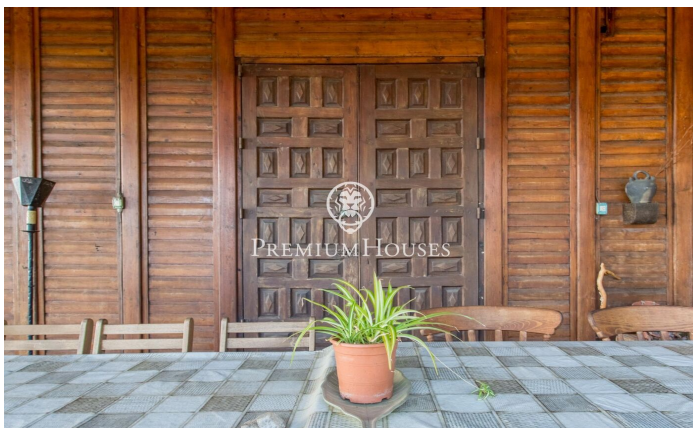
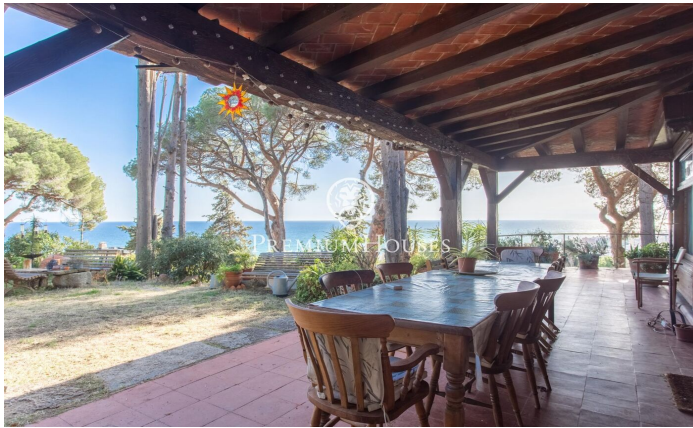


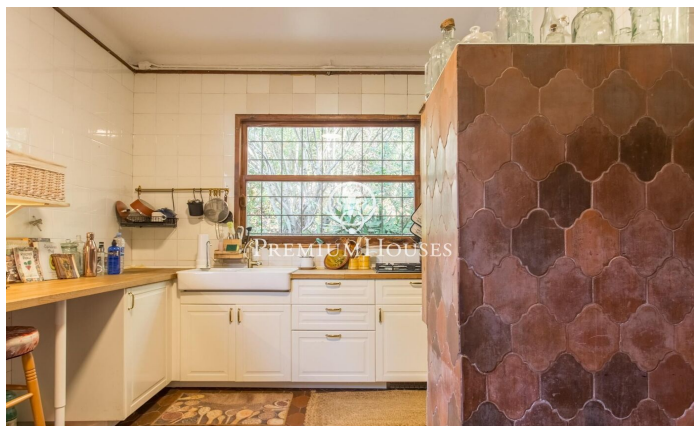
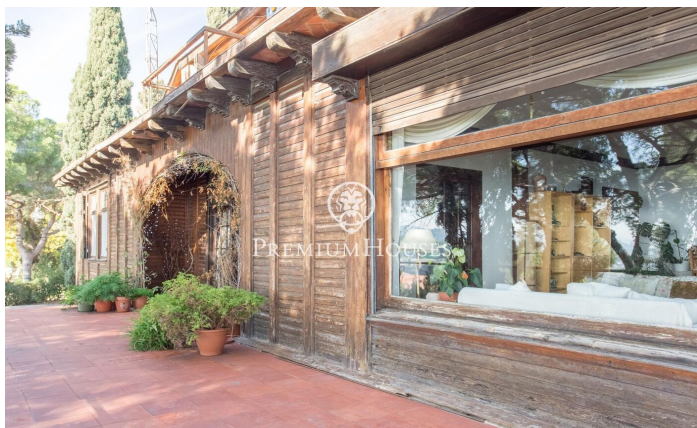
**Caldes d'Estrac / Maresme/Barcelona Costa Norte**

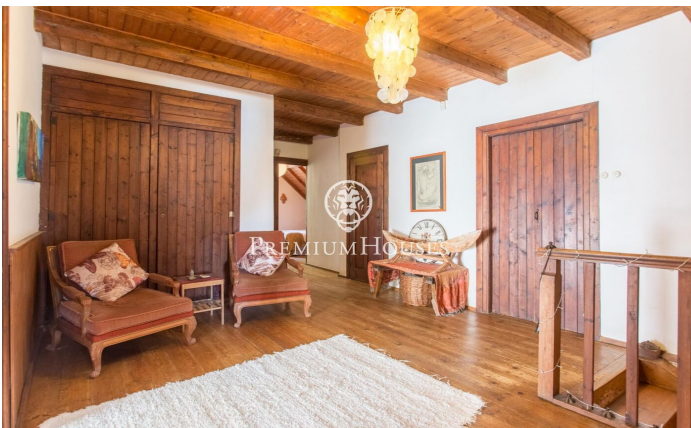
We present you this beautiful house, whose stone and wood structure makes it a unique piece, with a magnificent location and enjoying spectacular sea views. The Swiss Pavilion House, originally erected as a prominent part of the 1929 Barcelona International Exhibition, has witnessed a journey through time and circumstance, from its move from the Catalan capital to its current location in Caldes d'Estrac. Nestled in the idyllic setting of the Turó de Caldes and with a privileged view of the Mediterranean Sea, this single-family residence blends harmoniously with the rugged terrain that surrounds it. Its unique design, where wood predominates both in the floors and in the enclosures, adds an unmistakable charm. A stone wall embraces the property, giving it an aura of intimacy and shelter. With multiple entrances, including a side entrance which is kept closed, the house is distributed over ground and first floors. The main façade, facing west and towards the San Vicente road, stands out for its wooden main entrance, framed by a semicircular arch. A stone staircase invites you to enter the interior, where the first flat houses a balcony-viewpoint that blends masterfully with the gabled roof, offering a space to enjoy the surrounding views. The windows, with their rectangular f...

**1.500.000 €**

384 m<sup>2</sup>  
8 ???????  
5 ?????? ??????  
2,300 m<sup>2</sup> ??????????  
????????  
?????????  
??? ?? ????  
???????????? ????  
?????  
????????







Contact us for more information or to arrange a viewing

Tel: +34 93 798 88 99

[info@premiumhouses.com](mailto:info@premiumhouses.com)

[www.premiumhouses.es](http://www.premiumhouses.es)