



## Charming flat for sale in l'Eixample Dret

Ref: P-016250



### Dreta de l'Eixample / Barcelona Ciudad

Only ten minutes walking distance from the Sagrada Familia, we find this property with a total built area of 84 m<sup>2</sup>. Inside, it has two double bedrooms, one of which has direct access to an interior courtyard. It also includes a single room that can be used as a bedroom, office or study area. The living-dining room area is spacious and bright, separated from the kitchen, which is independent. It also has a complete bathroom. One of the highlights of this property is its central location, which means that it is in an easily accessible area. The apartment is very well connected to public transport, like the metro and several bus lines, which makes it easy to get around the city. In addition, nearby you can enjoy a wide and varied range of shops and services, from supermarkets and local shops to restaurants, cafés, and other establishments that make daily life more comfortable.

**420.000 €**

84 m<sup>2</sup>

3 ???????

1 ?????? ?????? ???????

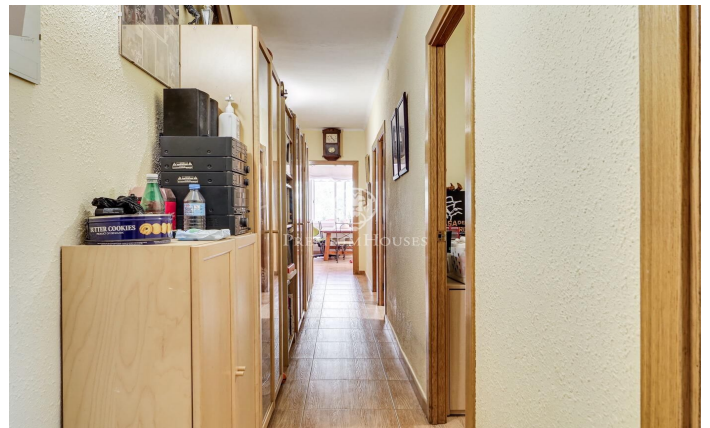
?????????????

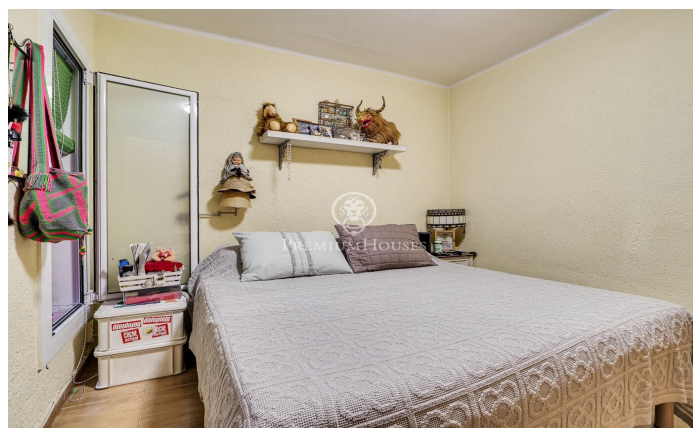
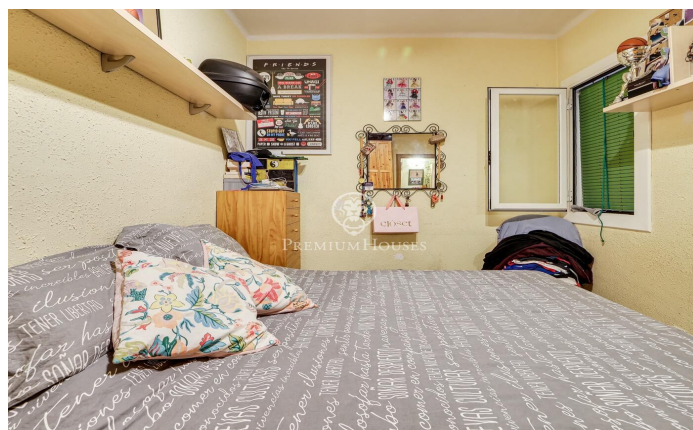
???????????

?????

????????????? ??????







Contact us for more information or to arrange a viewing

Tel: +34 93 200 30 79

[info@premiumhouses.com](mailto:info@premiumhouses.com)

[www.premiumhouses.es](http://www.premiumhouses.es)