

## Semi-Detached House with Views in La Collada

Ref: PHS100991

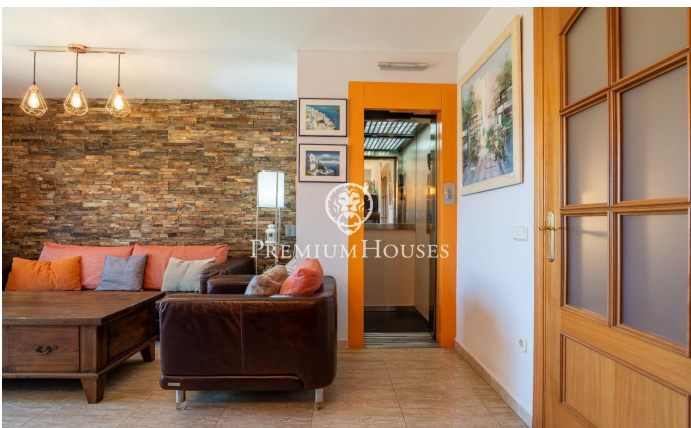


### Vilanova i la Geltrú / Barcelona Costa Sur

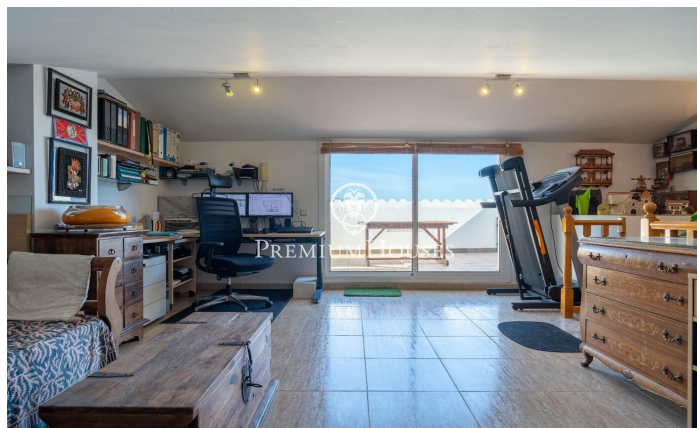
In the Collada neighborhood of Vilanova i la Geltrú we find this semi-detached house. From the property you can enjoy clear views on each floor. The property has an elevator and is in very good condition. This house is distributed over four floors. On the ground floor there is a garage with space for two cars and a laundry room. On the first floor we have the day area. It is composed of a living-dining room and a kitchen. We also find a single room and a full bathroom that serves the entire floor. On the second floor is the night area composed of an en-suite room. Next we have a double room and a single room. A full bathroom serves both rooms. On the third floor we find an attic. From it there is access to a terrace with a barbecue and clear views. This house is located in an urbanization of La Collada, a quiet residential area close to services. It also has easy access to the C-31 highway towards Barcelona and the airport.

**€335,000**

204 m<sup>2</sup>  
4 Bedrooms  
3 Bathrooms  
60 m<sup>2</sup> plot  
Heating  
Mountain views  
Storage  
Lift  
Phone  
Parking  
Terrace  
Built in closets







Contact us for more information or to arrange a viewing

Tel: +34 93 809 72 40

[sitges@premiumhouses.com](mailto:sitges@premiumhouses.com)

[www.premiumhouses.es](http://www.premiumhouses.es)