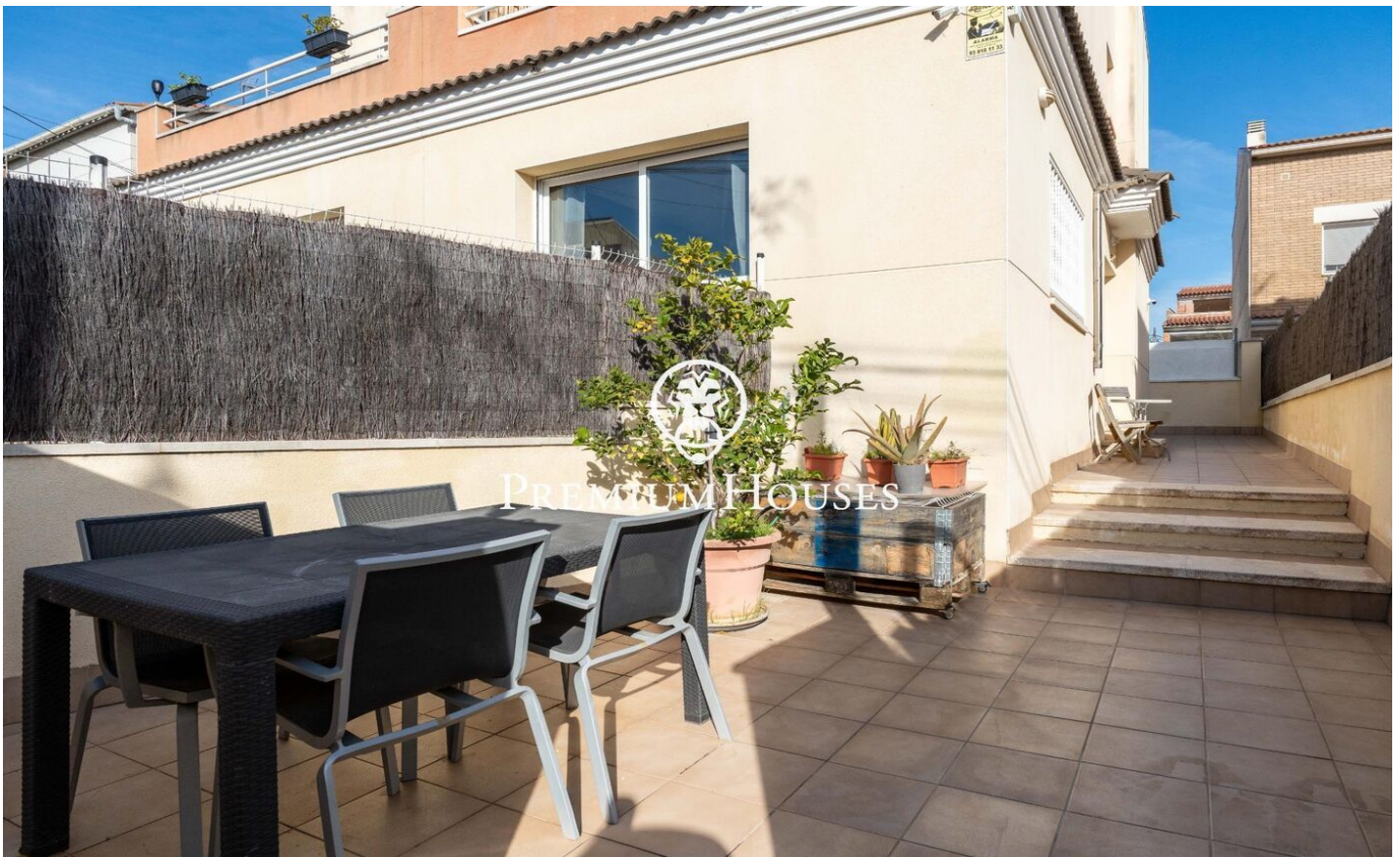




Semi-Detached House with Patio in La Collada

Ref: PHS101045

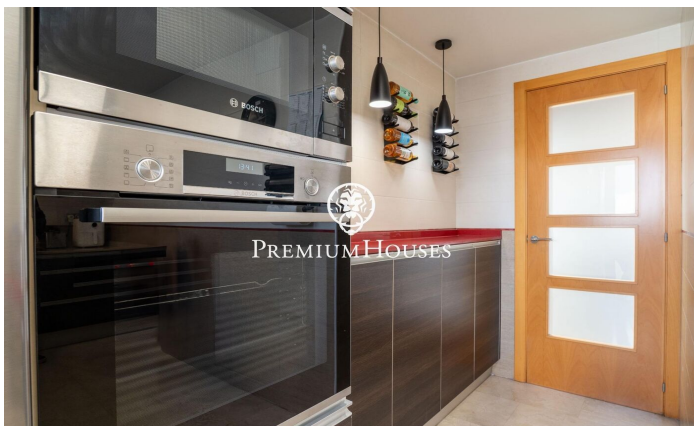
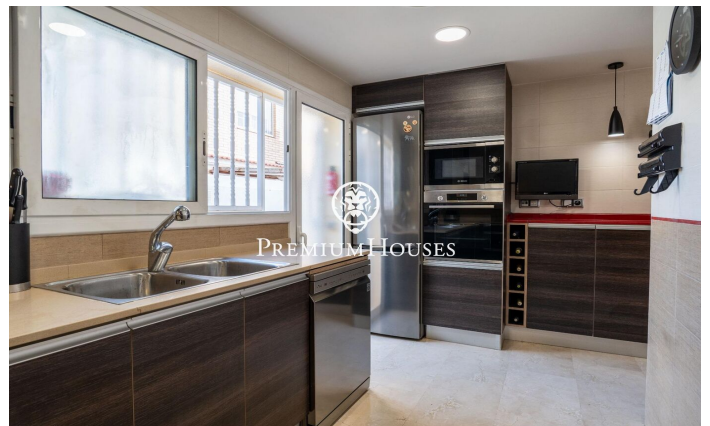
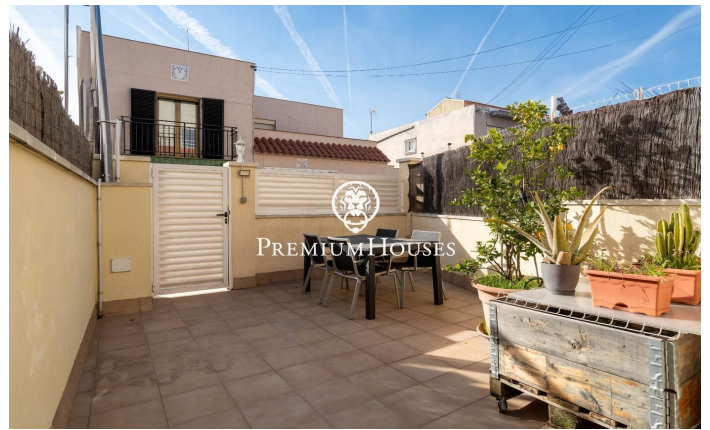
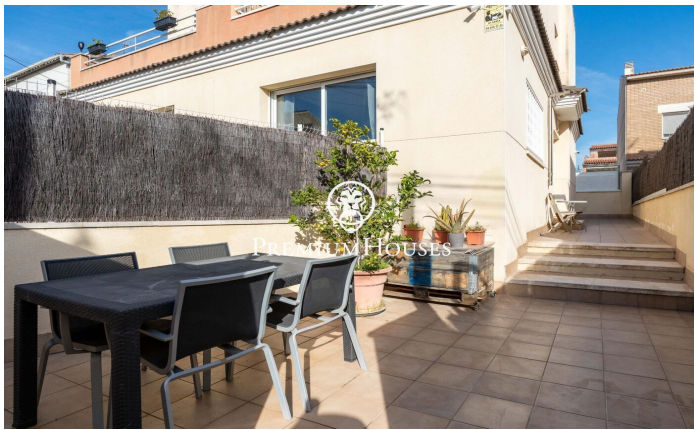


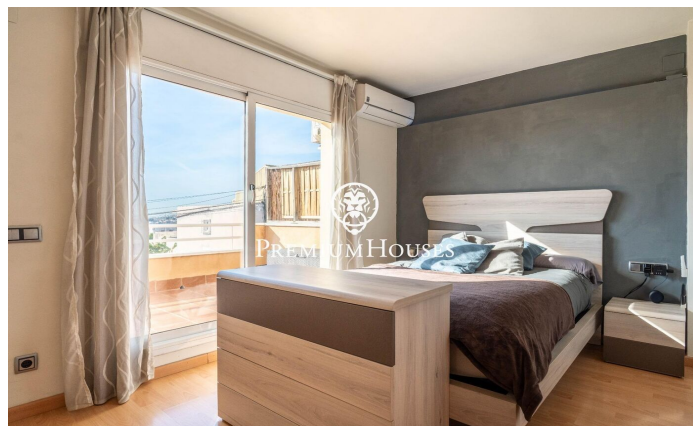
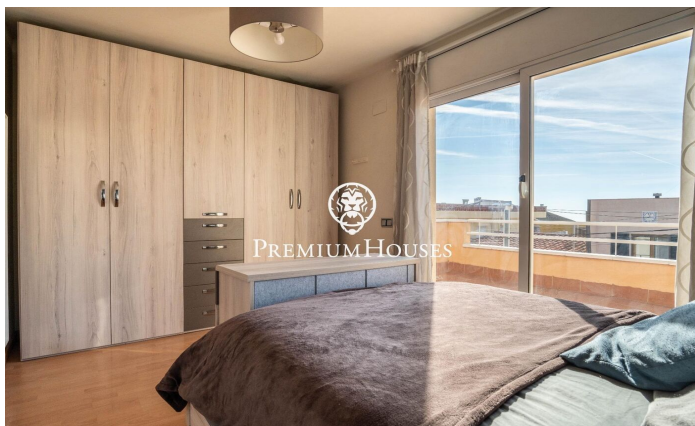
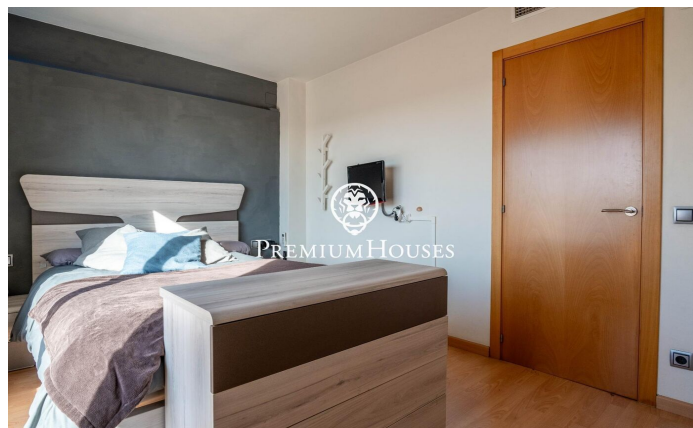
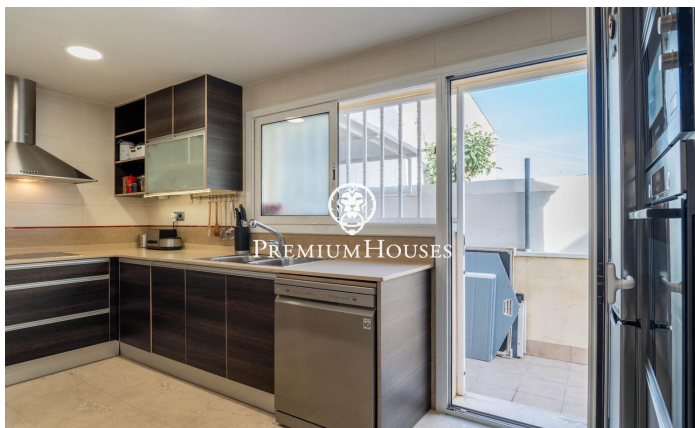
Vilanova i la Geltrú / Barcelona Costa Sur

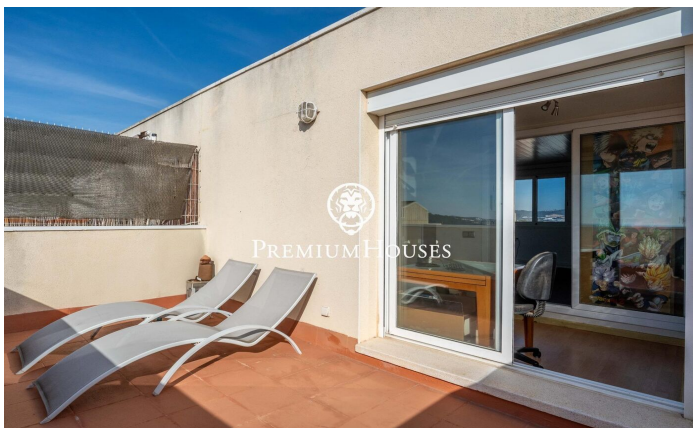
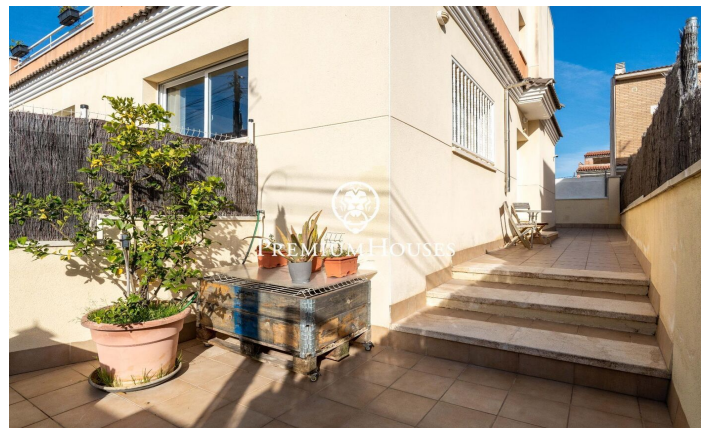
In the Collada neighborhood of Vilanova i la Geltrú we find this townhouse with a patio. The property is in very good condition. The house has a garage with capacity for two cars. Additionally, the property has eight solar panels. The house is divided into four floors. The ground floor is made up of a living-dining room and a separate kitchen. From both rooms there is an access to a large terrace. Additionally, there is a full bathroom. On the first floor, we have the night area that consists of two single rooms and a double room with access to a terrace. A full bathroom serves the rooms. On the second floor we find an attic that has two rooms with access to a terrace with sea views. In the basement there is a garage with capacity for two cars and a laundry room. The house has solar panels, it has a security camera circuit, the blinds, lights and air conditioning are domotized by Wi-Fi and voice control. The La Collada neighborhood is characterized by having a very quiet family atmosphere. The neighborhood is close to schools and has a very good bus connection to the center and the beaches of Vilanova i la Geltrú.

€326,000

159 m²
3 Bedrooms
2 Bathrooms
253 m² plot
A/C
Heating
Phone
Security
Parking
Terrace







Contact us for more information or to arrange a viewing

Tel: +34 93 809 72 40

sitges@premiumhouses.com

www.premiumhouses.es