



## House With Garden in Molí de Vent

Ref: PHS101071



### Vilanova i la Geltrú / Barcelona Costa Sur

In the Molí de Vent neighbourhood we find this semi-detached house with a charming patio and barbecue. The property has a large garage with capacity for two cars. The house is divided into four floors. On the first floor we find the day area which consists of a living-dining room with a glazed area and a large kitchen with access to the balcony. A full bathroom serves the floor. On the second floor we have the night area which consists of four bedrooms; two doubles, two singles and a full bathroom. On the third floor we find an attic with access to a solarium with sea views. On the ground floor we find a large hall and a garage with access to the patio. Additionally, there is also a laundry room and a pantry. The Molí de Vent neighbourhood of Vilanova i la Geltrú is a residential area surrounded by all essential services and exceptionally quiet. It is a twenty minute walk from the Rambla Principal, ten minutes from the beach and connected by constant buses to the centre and the station.

**€425,000**

217 m<sup>2</sup>  
4 Bedrooms  
2 Bathrooms  
112 m<sup>2</sup> plot  
A/C  
Heating  
Backyard  
Phone  
Fireplace  
Parking  
Terrace  
Balcony

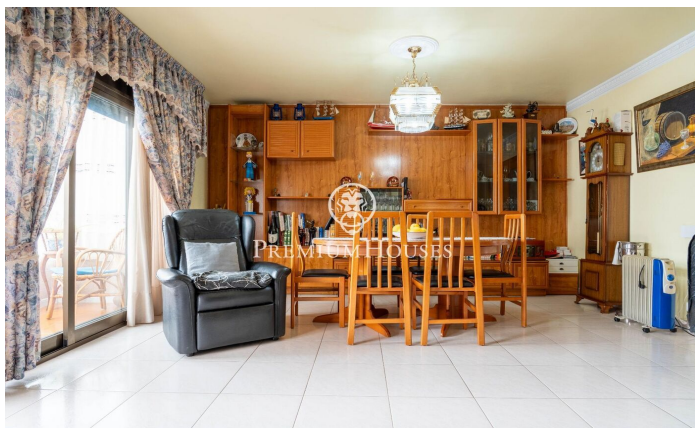
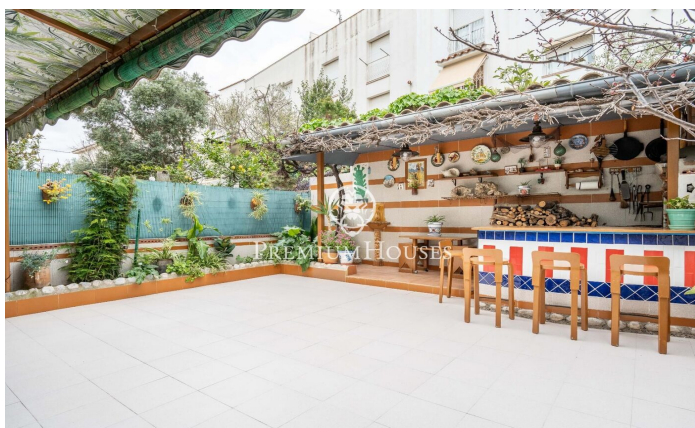




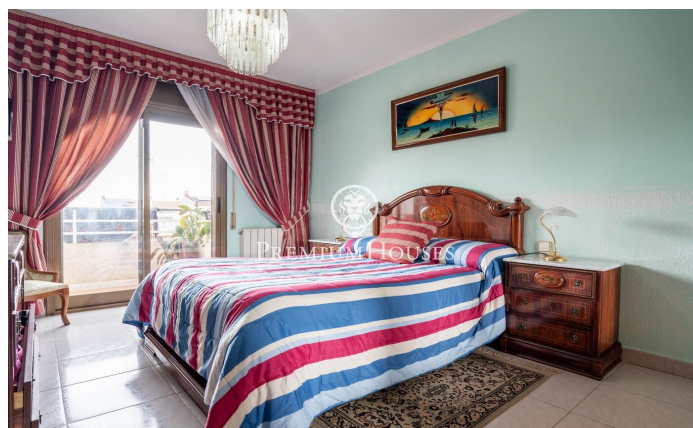
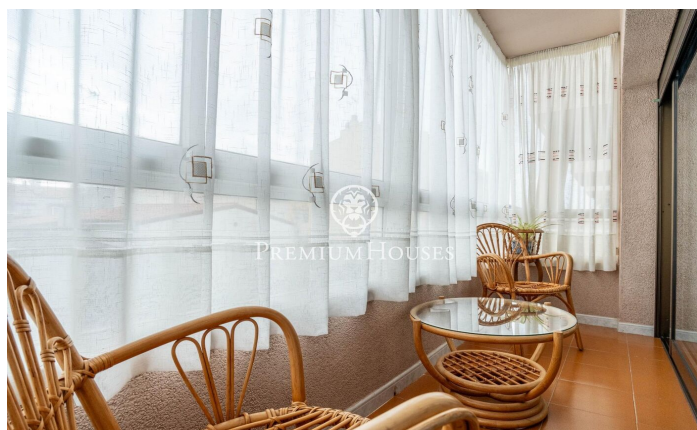
**PREMIUMHOUSES**

Excellence in Real Estate

Avda. Camí dels Capellans, 81  
Local 3 Sitges  
Tel: +34 93 809 72 40





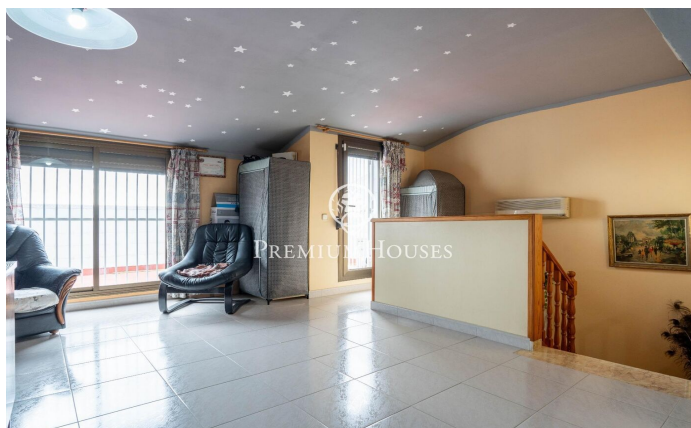
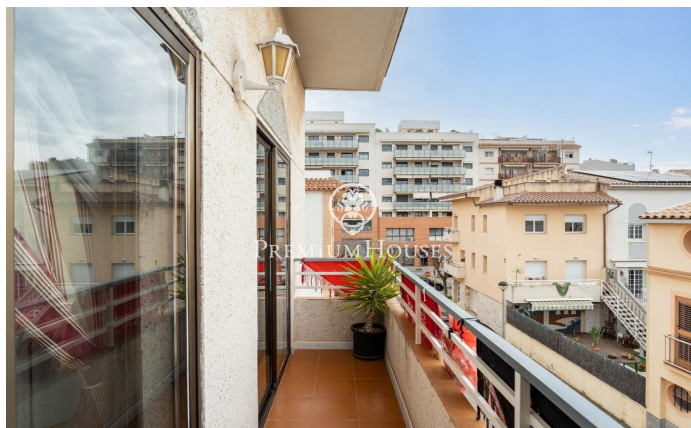
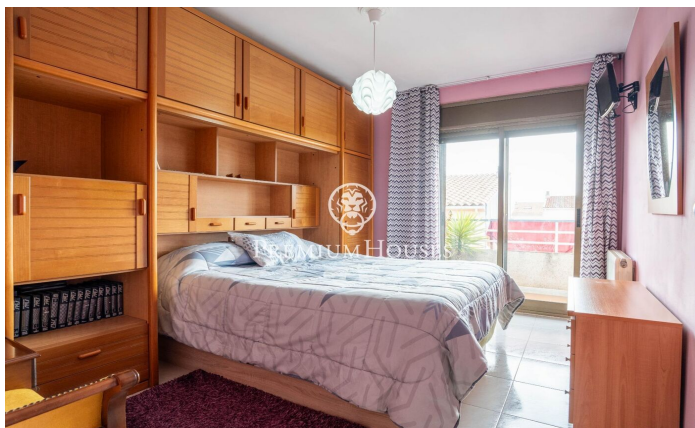






**PREMIUMHOUSES**  
Excellence in Real Estate

Avda. Camí dels Capellans, 81  
Local 3 Sitges  
Tel: +34 93 809 72 40



Contact us for more information or to arrange a viewing

Tel: +34 93 809 72 40

[sitges@premiumhouses.com](mailto:sitges@premiumhouses.com)

[www.premiumhouses.es](http://www.premiumhouses.es)