

## Ground Floor in Poblesec with Patio

Ref: PHS100911



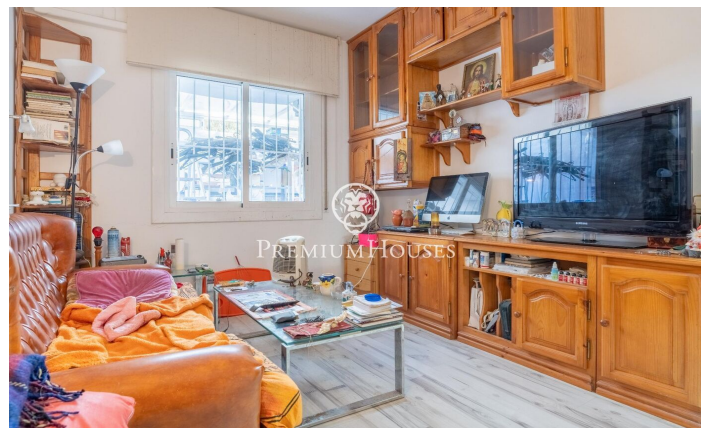
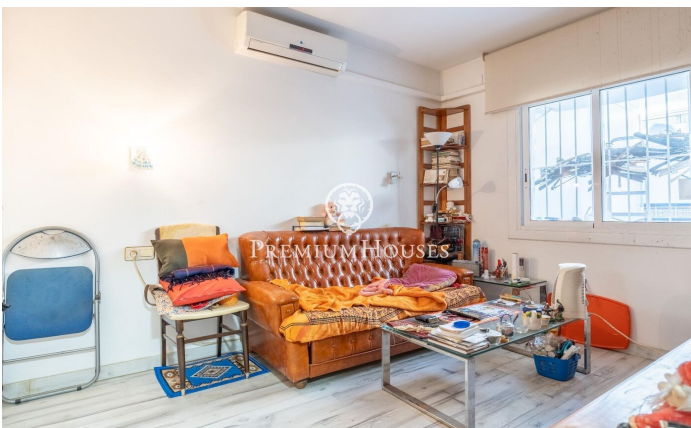
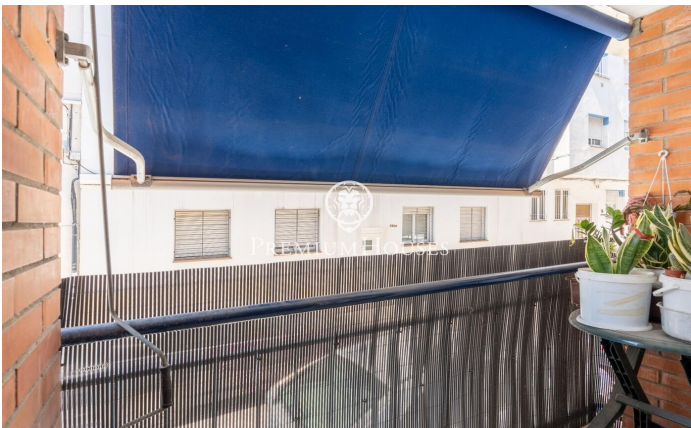
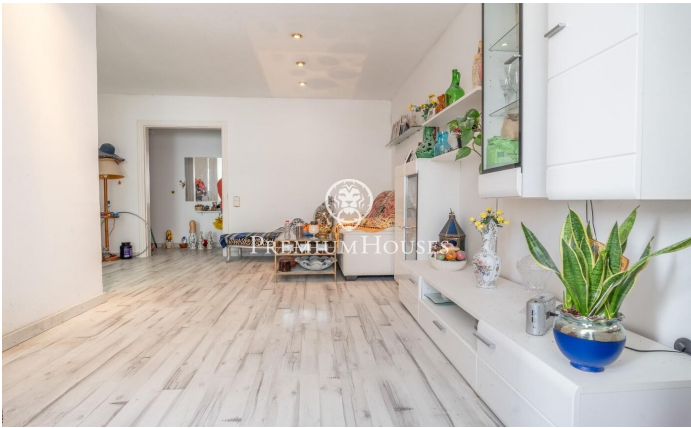
### Poble Sec / Sitges

In the Poblesec neighborhood of Sitges we find this ground floor with a large patio. The property faces south which offers natural light throughout the day. We access the day area as we enter the house. This space contains a living-dining room with access to a small balcony and a separate kitchen. The night area has two double bedrooms and a room with built-in wardrobes. In this same space we find a full bathroom and a guest toilet. From one of the rooms we access a 20 square meter patio. The Poblesec neighborhood is characterized by its excellent location with respect to all essential services and the center of Sitges. It is a residential neighborhood that enjoys great tranquility throughout the year.

**€390,000**

79 m<sup>2</sup>  
3 Bedrooms  
1 Bathroom  
A/C  
Heating  
Backyard  
Terrace  
Balcony  
Built in closets







Contact us for more information or to arrange a viewing

Tel: +34 93 809 72 40

[sitges@premiumhouses.com](mailto:sitges@premiumhouses.com)

[www.premiumhouses.es](http://www.premiumhouses.es)