



## Modern Independent House in La Plana

Ref: PHS100765



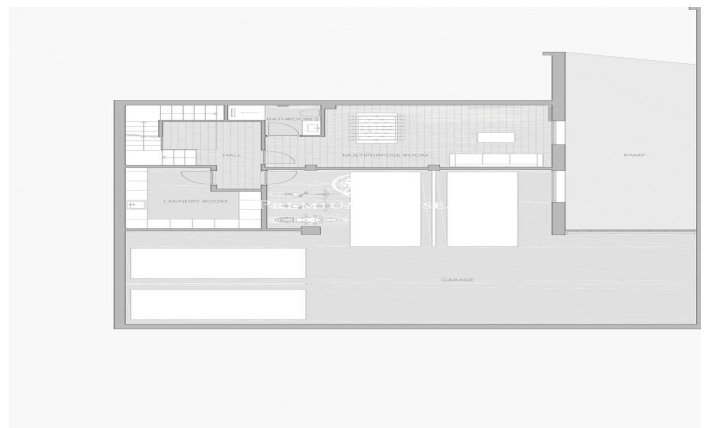
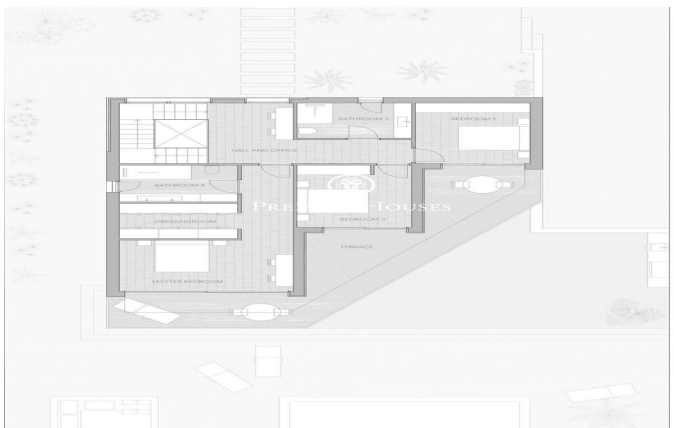
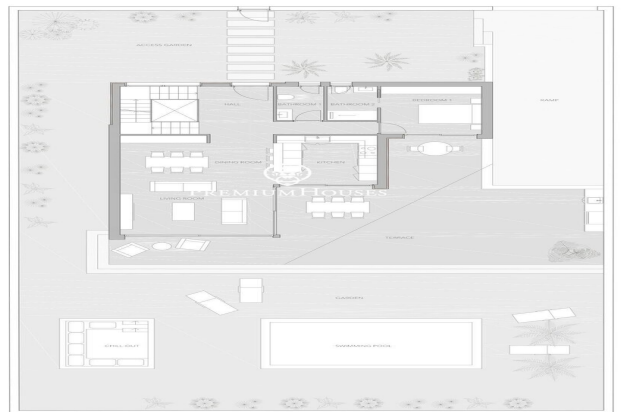
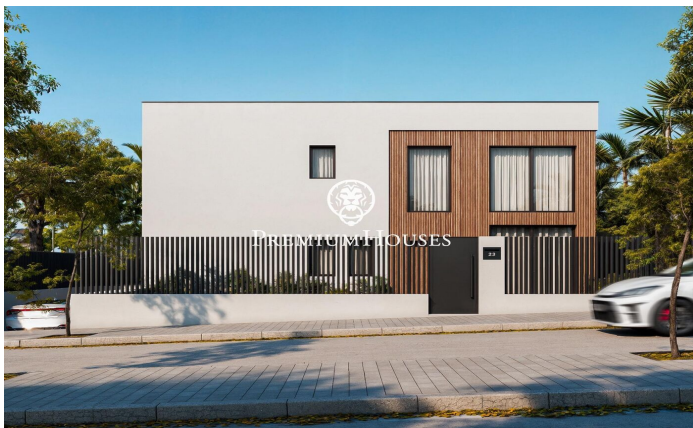
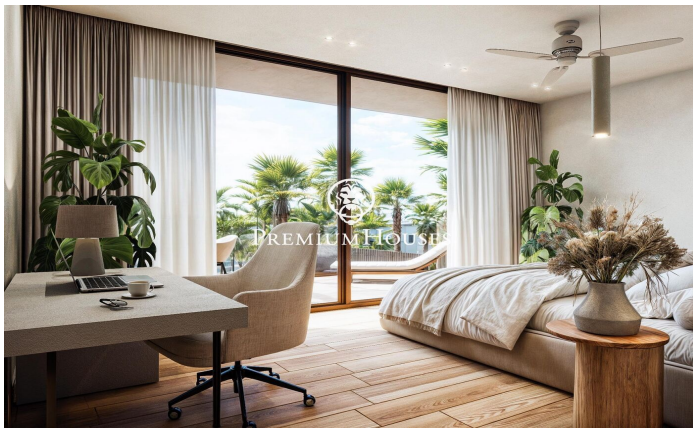
### La Plana / Sitges

In the La Plana neighborhood we have this new construction house project. The property has a garden to the rear and a swimming pool facing south. The house has a garage with capacity for four cars. The property is divided into three floors. On the ground floor we have a large living-dining room and an American kitchen. From both rooms there is an exit to a large terrace. On the same floor there is a double room en suite and a guest toilet. On the first floor we have the night area which consists of a master bedroom suite with dressing room, two double bedrooms and a full bathroom. From all rooms there is access to a terrace. In the basement there is a large open room, a laundry room and a garage with capacity for four cars, as well as a charging point for electric cars. The La Plana neighborhood of Sitges is a quiet residential area close to essential services. All this without giving up being within walking distance of the center.

**€2,450,000**

399 m<sup>2</sup>  
4 Bedrooms  
4 Bathrooms  
609 m<sup>2</sup> plot  
A/C  
Heating  
Phone  
Parking  
Built in closets





Contact us for more information or to arrange a viewing

Tel: +34 93 809 72 40

[sitges@premiumhouses.com](mailto:sitges@premiumhouses.com)

[www.premiumhouses.es](http://www.premiumhouses.es)



**PREMIUMHOUSES**  
Excellence in Real Estate

Avda. Camí dels Capellans, 81  
Local 3 Sitges  
Tel: +34 93 809 72 40

---

---

Contact us for more information or to arrange a viewing

Tel: +34 93 809 72 40

[sitges@premiumhouses.com](mailto:sitges@premiumhouses.com)

[www.premiumhouses.es](http://www.premiumhouses.es)

