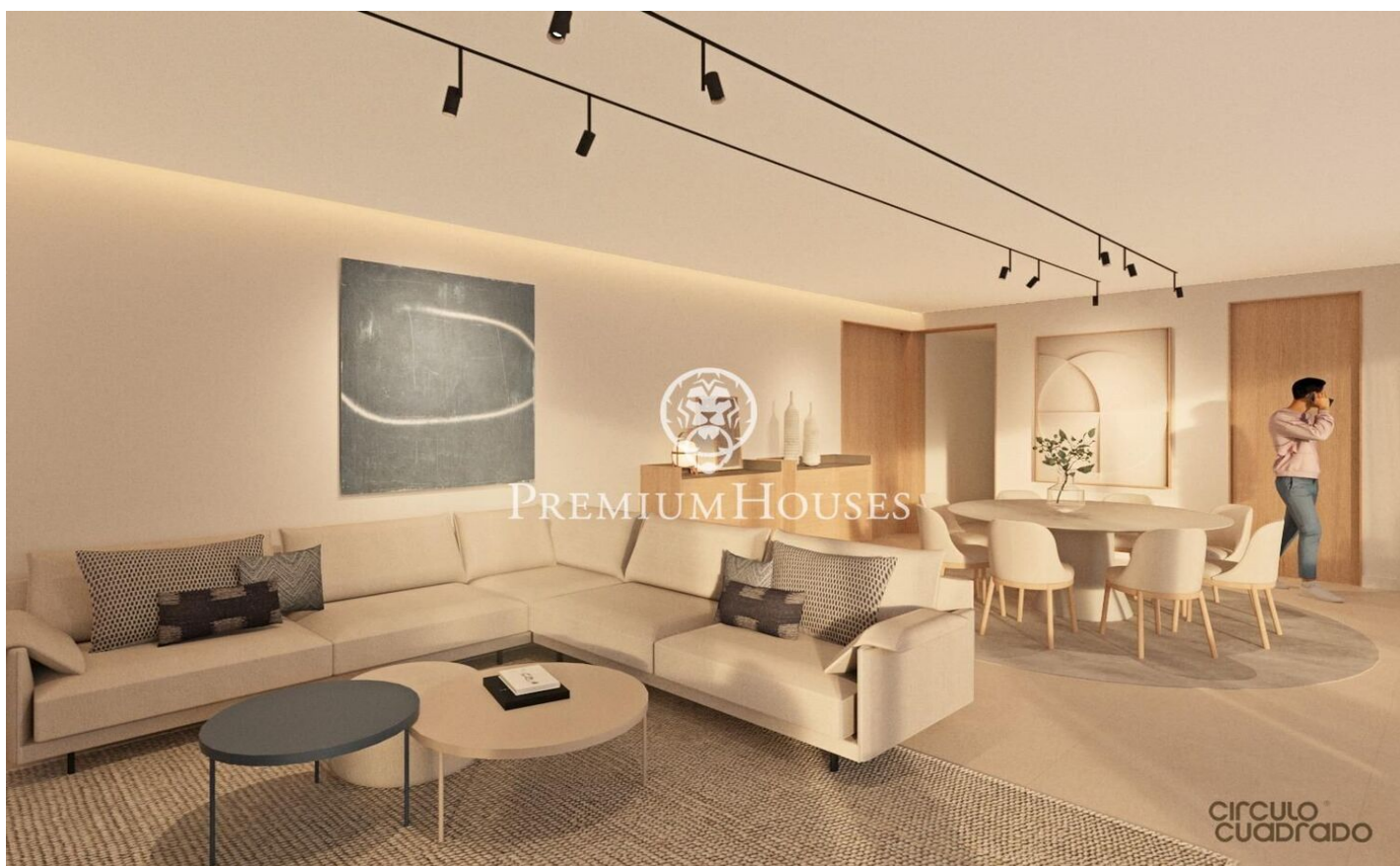


## Modern House in La Plana

Ref: PHS100761



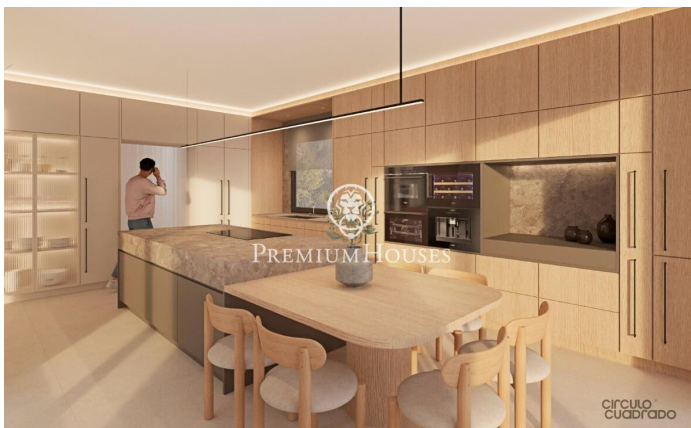
### La Plana / Sitges

In the La Plana neighborhood of Sitges we find this modern house. The property faces south. The house has a garage with capacity for three cars. The property is distributed over three floors. On the ground floor we have the day area. It consists of a living-dining room and a kitchen with an island. From the living room we access the garden with swimming pool. The floor is completed by a double bedroom and a full bathroom. On the first floor is the night area made up of three double bedrooms, all en suite and with access to a terrace. All bedrooms have built-in wardrobes. In the basement there is a garage with capacity for three cars, a laundry room, a multipurpose room, a bathroom and a storage room. An elevator connects all floors of the house. The La Plana neighborhood of Sitges is a quiet residential area close to essential services. All this without giving up being within walking distance of the center.

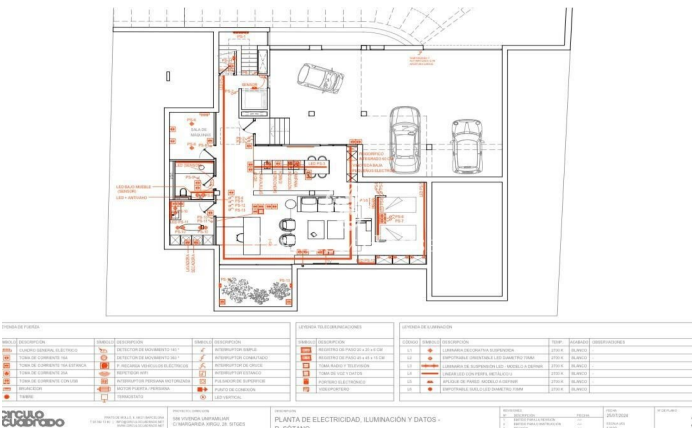
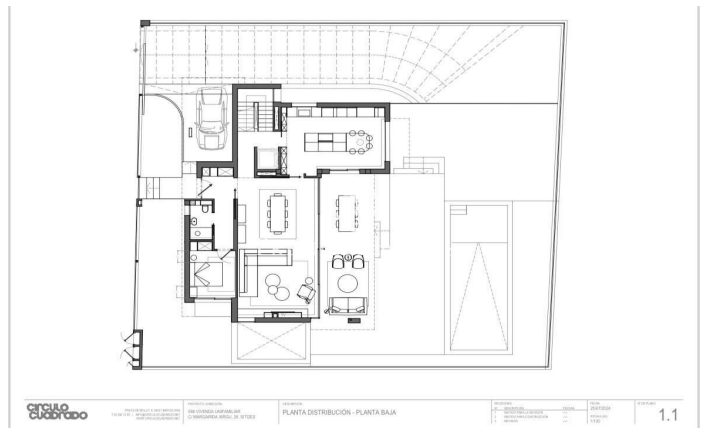
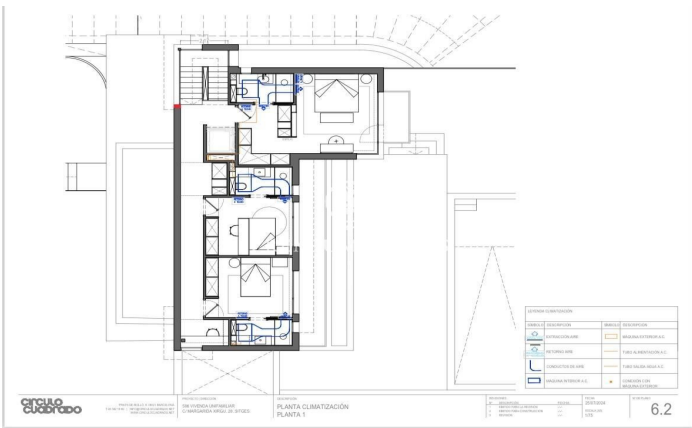
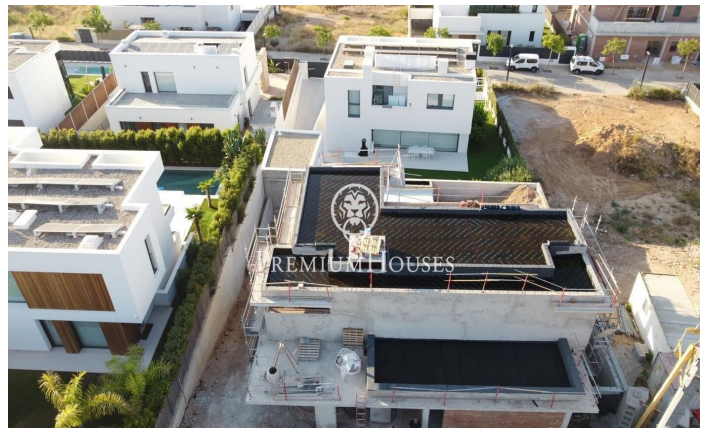
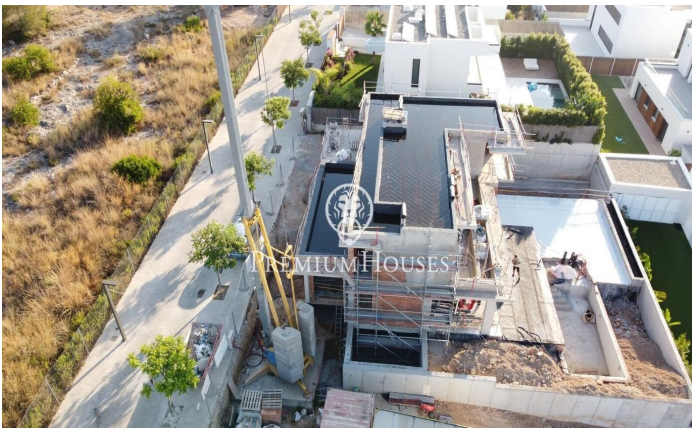
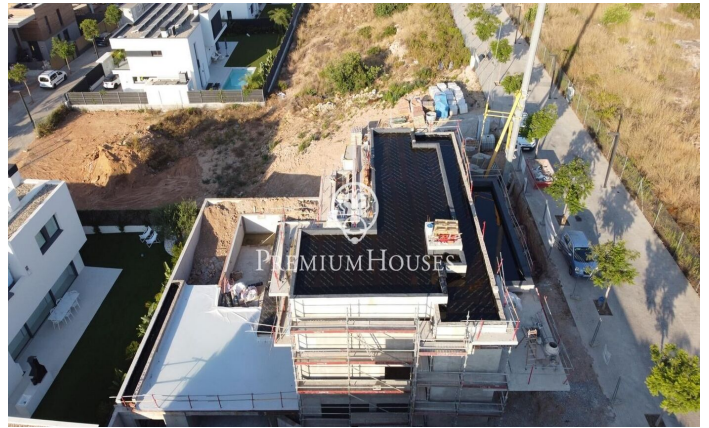
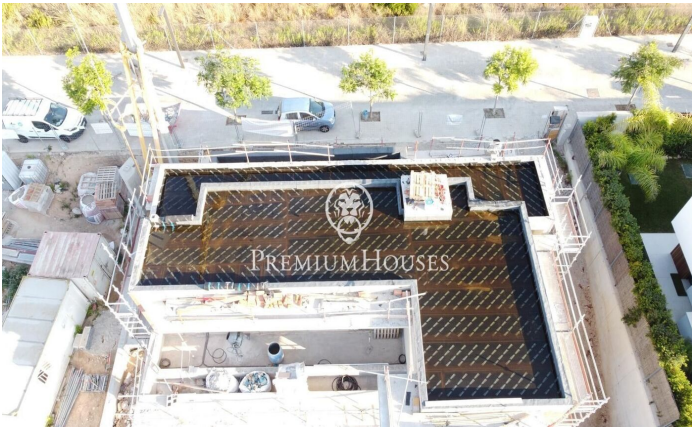
**€2,600,000**

480 m<sup>2</sup>  
4 Bedrooms  
6 Bathrooms  
604 m<sup>2</sup> plot  
A/C  
Heating  
Sea views  
Backyard  
Storage  
Lift  
Phone  
Parking  
Built in closets









Contact us for more information or to arrange a viewing

Tel: +34 93 809 72 40

[sitges@premiumhouses.com](mailto:sitges@premiumhouses.com)

[www.premiumhouses.es](http://www.premiumhouses.es)

