



Spectacular flat for sale in La Dreta de l'Eixample

Ref: P-016340

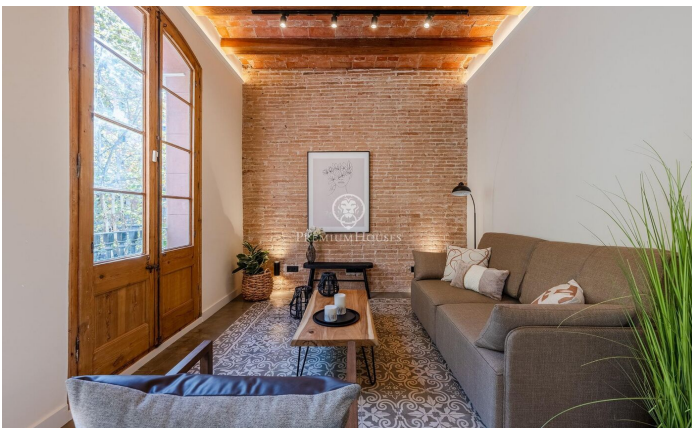


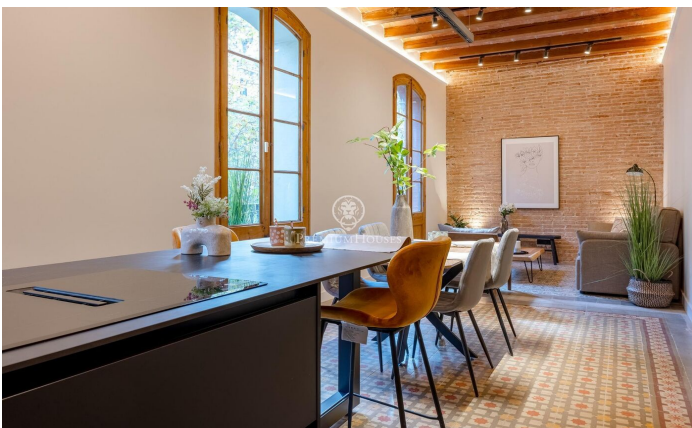
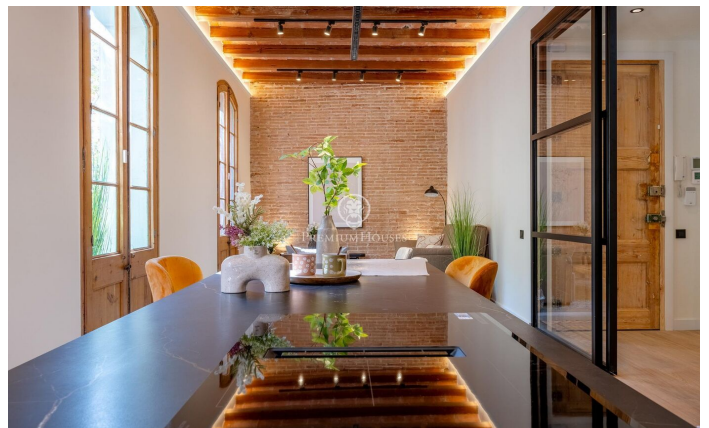
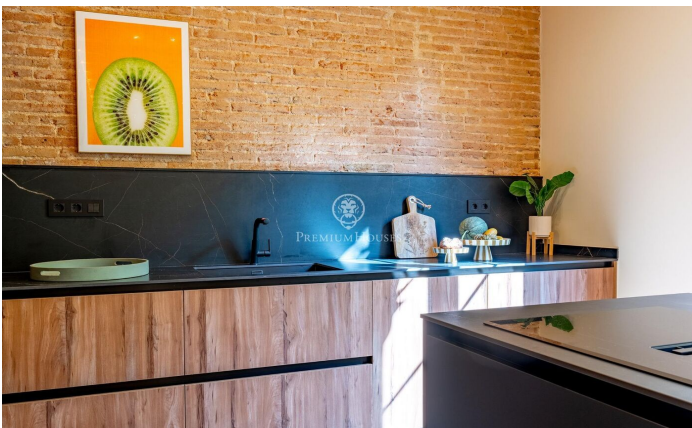
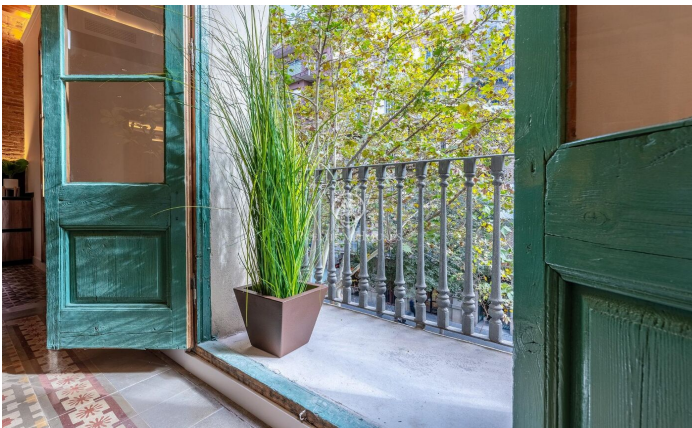
Dreta de l'Eixample / Barcelona Ciudad

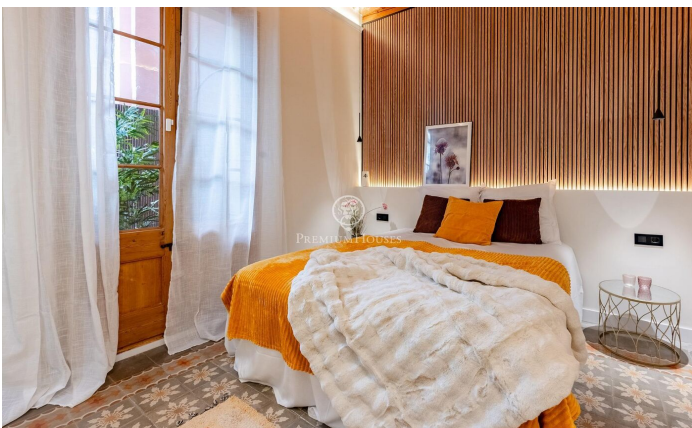
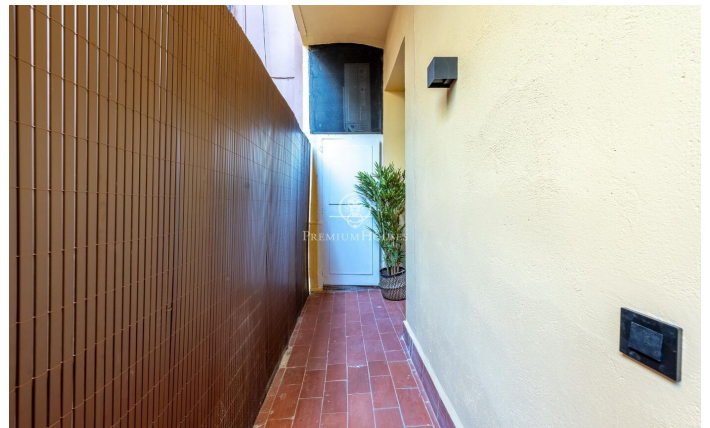
Located on the emblematic Carrer Rosellón, just a minute from Paseo de Gracia, this spectacular 130 m² flat combines classic elegance with contemporary luxury. With three spacious bedrooms, one of them en-suite with a designer bathroom, this flat offers a unique and comfortable space. Brightness is one of its strong points, thanks to its three northeast-facing balconies, which flood the interior with natural light throughout the day. The Catalan vaulted ceilings and tiled floors add a special, authentic character, while the modern kitchen with island is fully equipped to satisfy all your needs. The location is unbeatable, with excellent public transport connections providing easy access to every corner of the city. In addition, the area offers a full range of shops, supermarkets, restaurants and cafés, making every day more convenient and enjoyable.

€1,050,000

131 m²
3 Bedrooms
2 Bathrooms
A/C
Heating
Backyard
Lift
Terrace
Balcony
Built in closets







Contact us for more information or to arrange a viewing

Tel: +34 93 200 30 79

info@premiumhouses.com

www.premiumhouses.es