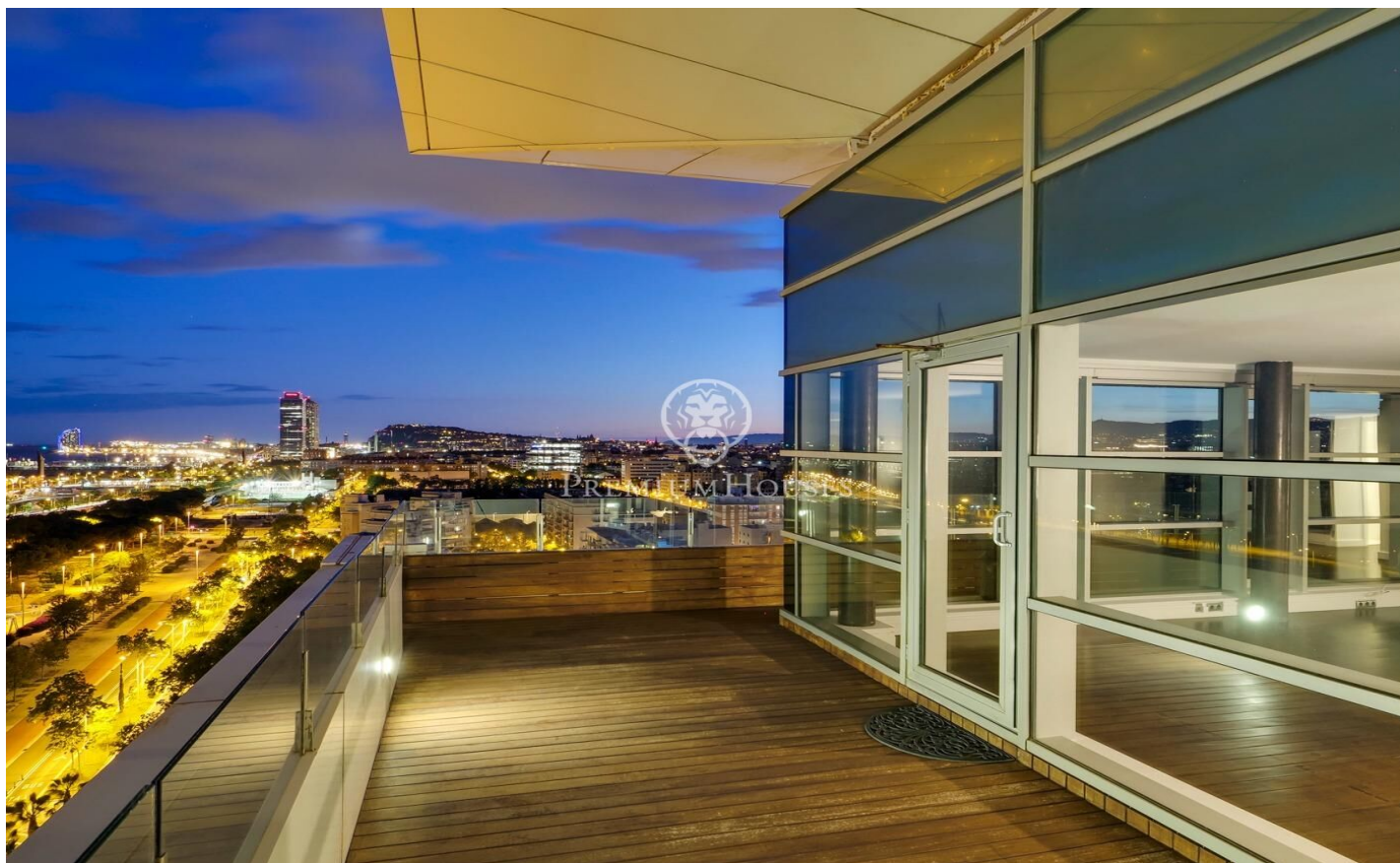


Spectacular penthouse with terrace and panoramic views of the sea and Barcelona

Ref: P-015830

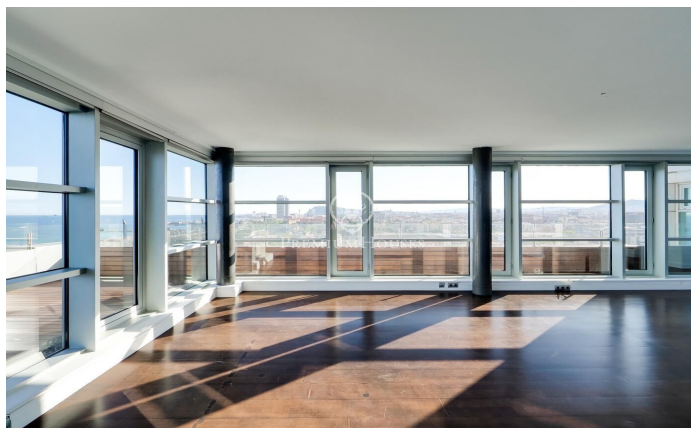
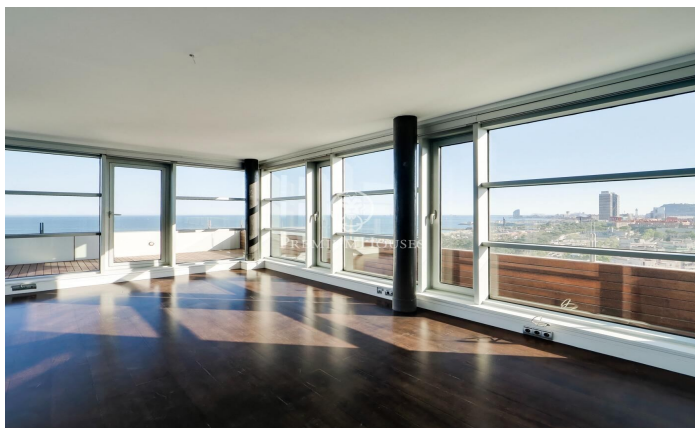
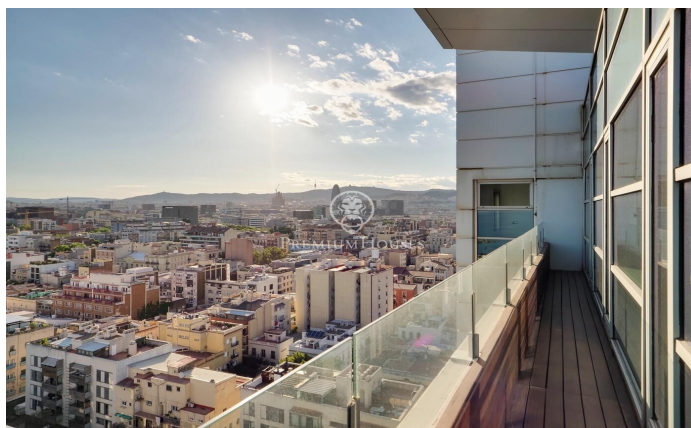
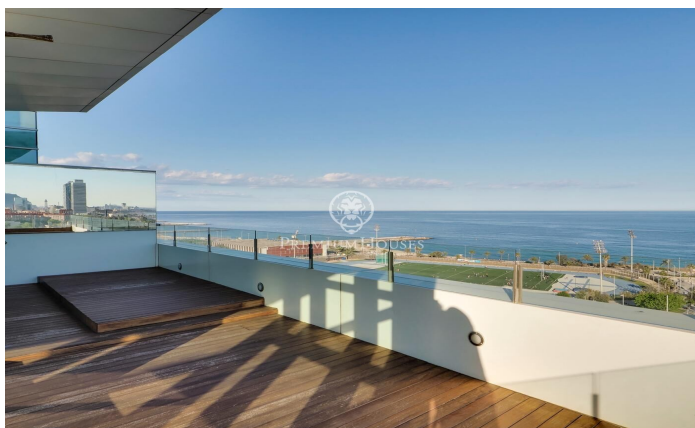
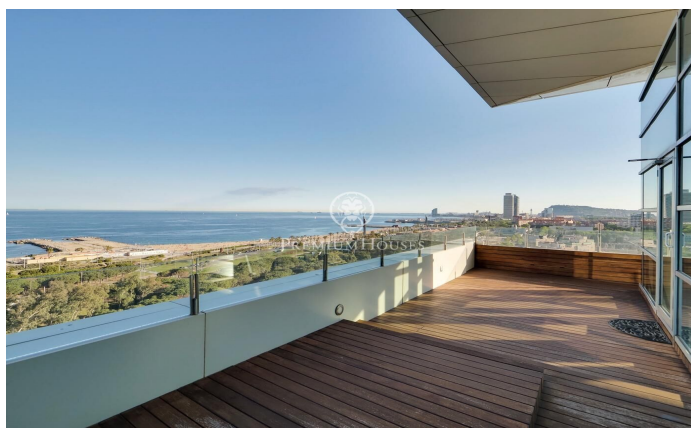
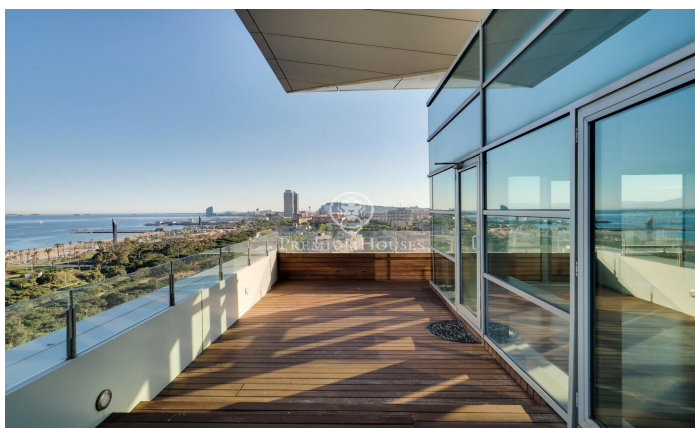
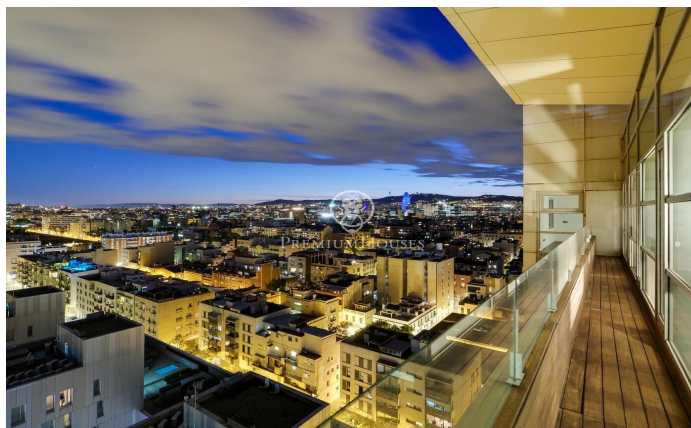
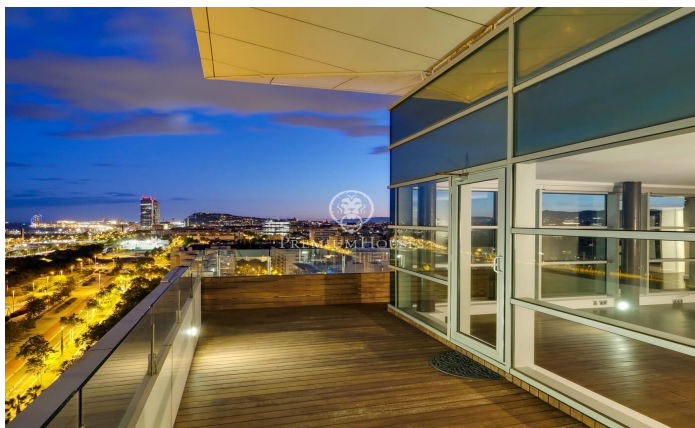


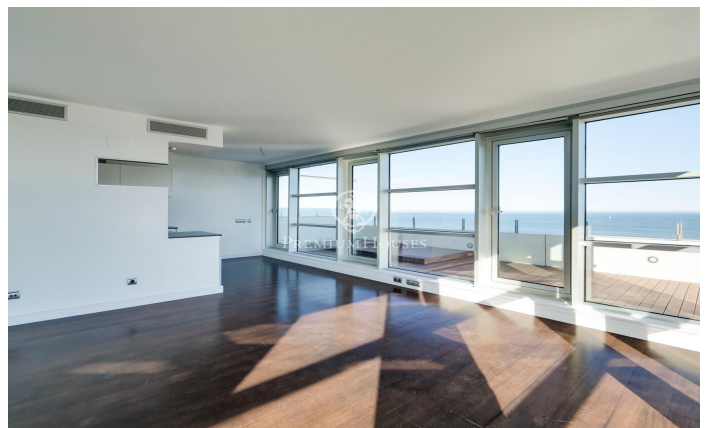
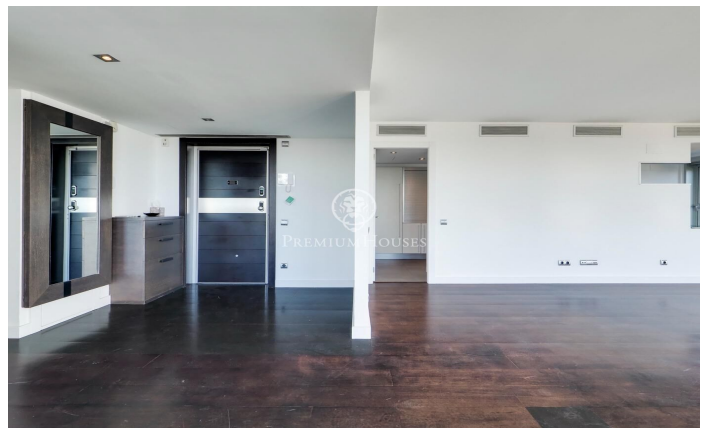
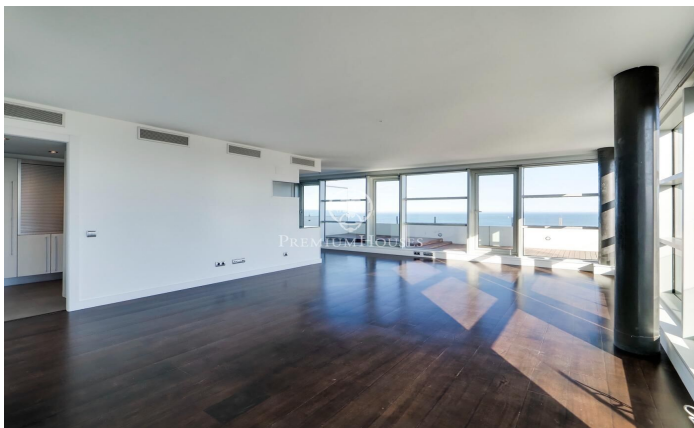
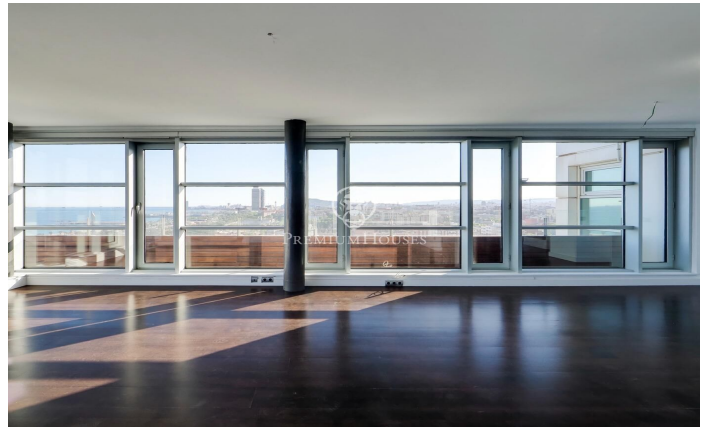
Diagonal Mar/Front Marítim del Poblenou / Barcelona Ciudad

This fabulous penthouse stands out for its fantastic terrace that offers a unique panorama with views of the sea and the city of Barcelona from the living room and bedrooms. It is located on the 14th floor of a modern building on the seafront, situated in the Poblenou neighbourhood just a few steps from the Mar Bella beach, the park and the Rambla de Poblenou. The property has 152 built meters and 32 m2 of common elements according to Cadastre and a terrace of 30 m2. It was refurbished in 2017. From the entrance hall there is a large living-dining room with an open kitchen of 50 m2 and access to the terrace that completely surrounds it. The sleeping area is composed of a large 21m2 bedroom suite with its own bathroom with jacuzzi bath, hydro-massage shower, and a second double bedroom. Both rooms are exterior and enjoy excellent views and plenty of light. There is also a bathroom and a guest toilet. The penthouse has excellent finishes, parquet flooring, ducted hot/cold air conditioning, double aluminium carpentry with thermal insulation and top of the range appliances. The building has a lift, concierge and 24-hour security. The price includes a storage room and 2 parking spaces. Located in one of the most modern and emblematic neighbourhoods of Barcelona, it has all the ser...

€1,895,000

152 m²
2 Bedrooms
2 Bathrooms
A/C
Heating
Sea views
Storage
Lift
Phone
Parking
Terrace
Balcony
Built in closets







Contact us for more information or to arrange a viewing

Tel: +34 93 200 30 79

info@premiumhouses.com

www.premiumhouses.es