

Beautiful English style house located in l'Ametlla del Vallès.

Ref: PH102477

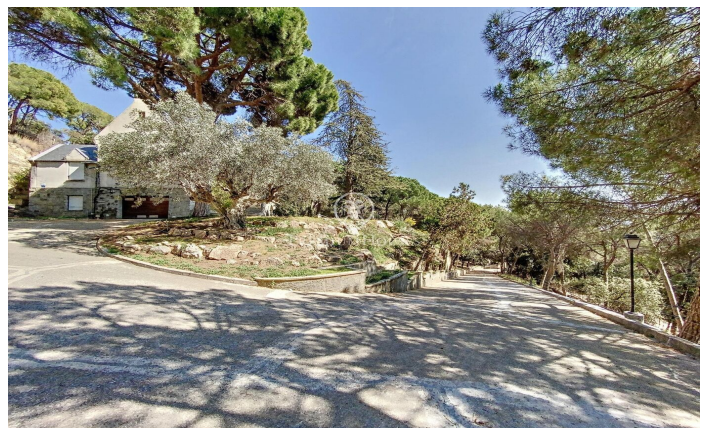
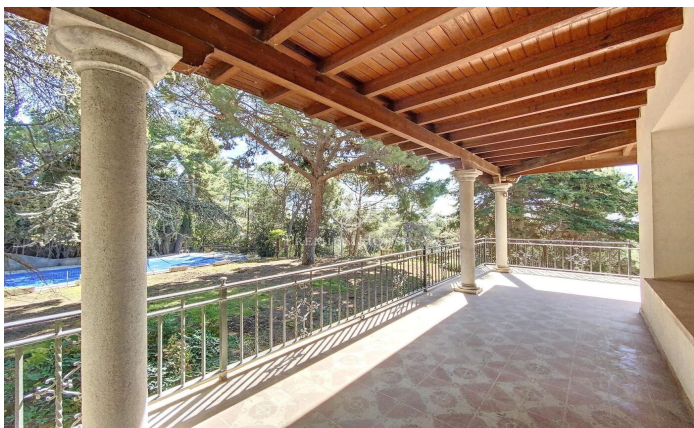
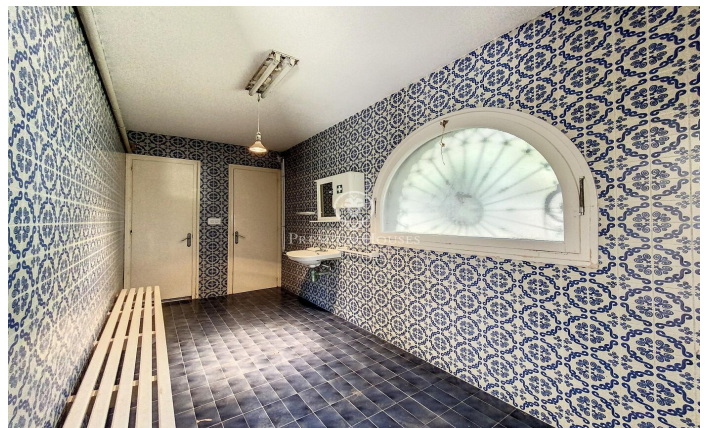
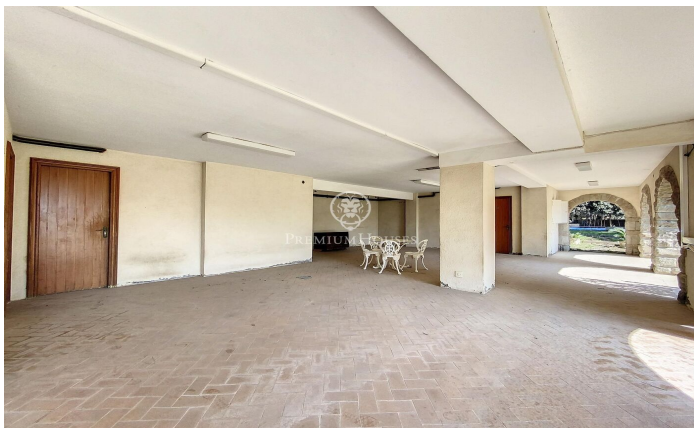
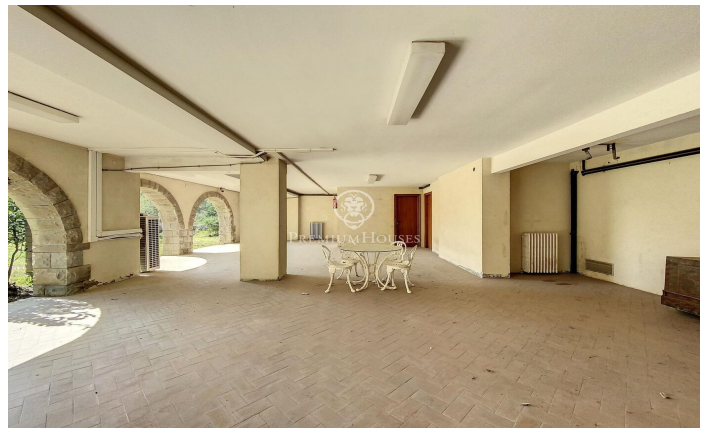


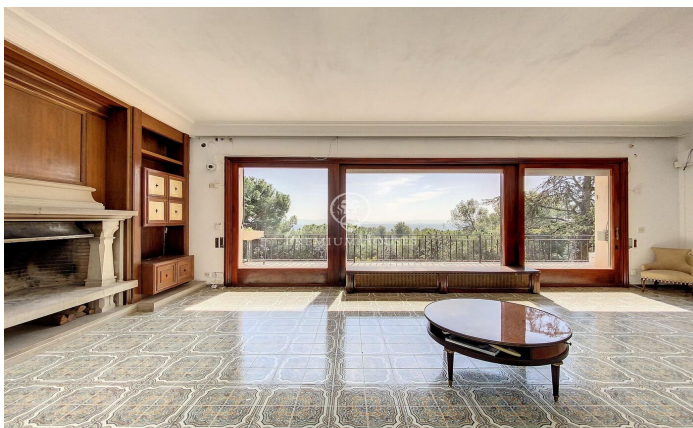
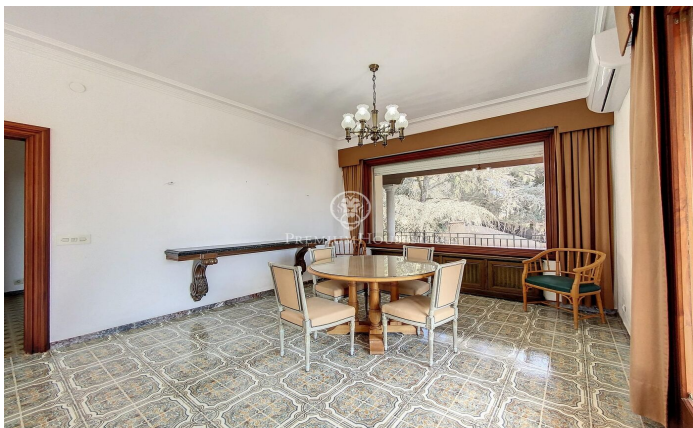
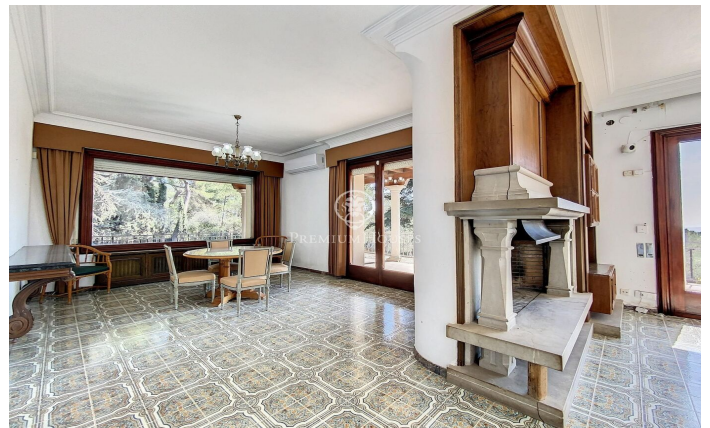
L' Ametlla del Valles / Other locations

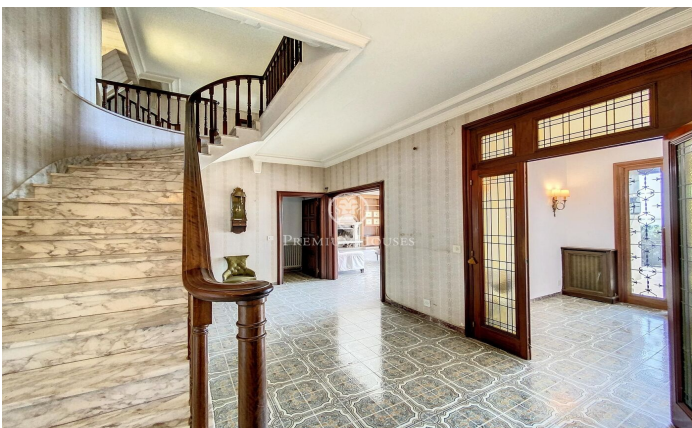
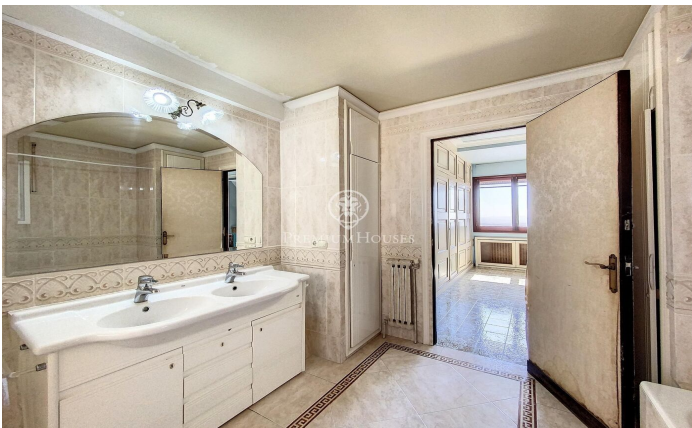
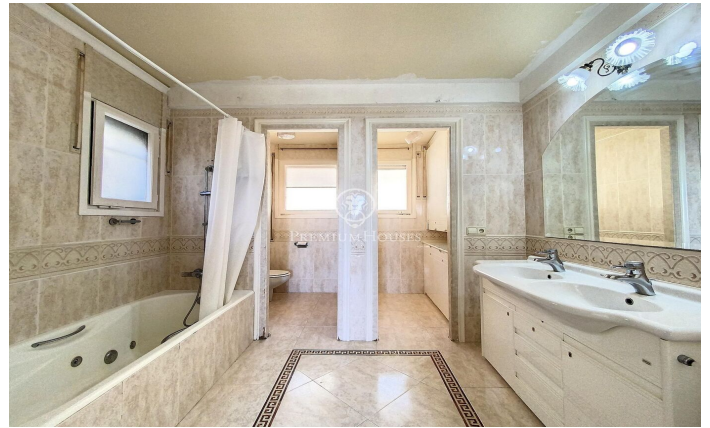
L'Ametlla is one of the most beautiful villages in Vallès Oriental. Located at the base of the Prelitoral mountain range, it enjoys a Mediterranean climate and a modernist architectural heritage that gives it the air of a stately garden town. Its population is approximately 9,000 inhabitants and the family income is one of the highest in Catalonia. It has a very dynamic community life and culture is one of the pillars of the town. The mansion we present to you is located in the area of Sant Nicolau, very close to the centre but at a sufficient distance to maintain the necessary tranquillity and privacy. It was built in 1974 in the middle of a 1 hectare plot of land designed with an elegant English style and stately interiors. It is distributed in different floors and all of them offer spacious and luminous spaces with beautiful views. It has a large swimming pool with changing rooms and bathroom next to a large porch which is a summer delight and which communicates directly with the garage and the wine cellar. On the main floor, apart from the large living room with fireplace, the dining room, an office which also has a fireplace, a kitchen with pantry and a guest toilet, there is an en suite bedroom. On the first floor there are 4 double bedrooms with 2 bathrooms and 1 bedroom ...

€1,200,000

528 m²
7 Bedrooms
6 Bathrooms
9 m² plot
Pool
A/C
Heating
Phone
Fireplace
Built in closets







Contact us for more information or to arrange a viewing

Tel: +34 93 798 88 99

info@premiumhouses.com

www.premiumhouses.es